

FACT BOOK 2018

WEST CHESTER UNIVERSITY OF PENNSYLVANIA

West Chester University of Pennsylvania Office of Institutional Research

**887 South Matlack Street
West Chester, PA 19383
Telephone (610) 436-2835**

Fax (610) 436-2635

Introduction & Acknowledgements

This Fact Book provides some of the most commonly requested information about West Chester University. Much of the information is drawn from the University's database and state mandated reports. Other offices and sources used are cited throughout the document. The cooperation of those offices and sources is much appreciated.

The Fact Book is divided into several chapters: Admissions, Enrollment, Retention/Graduation Rates, Academic Degree Programs & Accredited Programs, Graduation/Degree Information, and Resources (including financial aid), Services and Facilities.

Comments and suggestions about additional information that might be included are much appreciated. Please forward your suggestions to ninamdar@wcupa.edu.

Additional institutional information is available on our website: <http://www.wcupa.edu/infoservices/oir/>

Table of Contents

Table of Contents	2-3
WCU Quick Facts	4
GENERAL INFORMATION	
Statement of Mission and Goals	6-8
West Chester University Organizational Chart	9
ADMISSIONS	
Undergraduate Admissions Standards	11
Admission Application Statistics	12-13
First Time Full-Time First Year by Gender and Race/Ethnicity	14
First Time Full-Time First Year by Admission Type	15
Feeder High Schools: Fall 2018	16
Feeder Colleges: Fall 2018	17
First Time First Year Enrollment by County	18
First Time First Year Enrollment by State	19
First-Time First Year Admission Yield Statistics	20
First-Time First Year Admission Yield Chart	21
First-Time Transfer Admission Yield Statistics	22
First-Time Transfer Admission Yield Chart	23
ENROLLMENT	
Head Count Enrollment by Gender and Race/Ethnicity	25
Head Count Enrollment by Degree Status and College Fall 2018	26
Head Count Enrollment by State: Fall 2015 to 2018	27-28
Enrollment by County for Pennsylvania Residents: Fall 2018	29
Head Count Enrollment by Ethnicity and Gender Fall 2014 to Fall 2018	30

To be continued.....

Table of Contents (continued)

ENROLLMENT (continued)

Head Count Enrollment by College : Fall 2014 to Fall 2018	31-32
Head Count Enrollment by Student Level: Fall 2013 to 2018	33-34
Credit Hours and Student FTE Enrollment	35

RETENTION AND GRADUATION

Retention & Graduation Rates for First-Time, Full-Time First Year: University Summary	37
Second-Year Retention Rates for First-Time, Full-Time First Year by Race/Ethnicity and by Gender	38
Four and Six-Year Graduation Rates by Race/Ethnicity	39
Four and Six-Year Graduation Rates by Gender	40

ACADEMIC AND DEGREE PROGRAMS

Undergraduate Degrees and Certificate Programs	42-43
Graduate Degrees and Certificate Programs	44-45
Professional and Program Accreditations	46-47

DEGREES CONFERRED

Undergraduate and Graduate Degrees Conferred by College and Academic Plan	49-63
---	-------

RESOURCES, SERVICES & FACILITIES

Tuition and Fees	65
Library Resources	67

Quick Facts

West Chester University
West Chester, PA 19383
Telephone (610) 436-1000
<http://www.wcupa.edu/>

Founded	1871
President	Christopher M. Fiorentino
University Accreditation	Middle States Commission on Higher Education
Fall 2018 Enrollment*	17,527
Undergraduate	14,567
Graduate	2,960
Fall 2018 Credit Hours	226,007.5
Undergraduate	205,674.5
Graduate	20,333.0
Undergraduate Degree Programs	56
Graduate Degree Programs	44
Master's Programs	40
Doctoral Programs	4
Degrees Awarded in 2017-2018	4,559
Bachelor's	3,671
Master's	848
Doctoral	40

*Represent IPEDS unduplicated total headcount.

Degree/Non Degree/Certificate etc. program counts displayed above include only those programs which are offered to incoming new students.



General Information

Statement of Mission and Goals

West Chester University is a community of educators that develops graduates to succeed personally and professionally and contribute to the common good.

WCU GRADUATES WILL:

Apply scientific reasoning and demonstrate quantitative and qualitative literacy
Collaborate with others to solve problems and address societal needs
Communicate effectively and participate in civic discourse
Engage inclusively in a diverse society
Understand the ethical implications of decisions and the world in which they live

INSTITUTIONAL GOALS:

To fulfill its mission as a public institution serving the Commonwealth, West Chester University will focus on student success and institutional improvement as measured by the degree to which WCU demonstrates:

Access to learning
Community and cultural engagement
Continuous improvement
Critical thinking
Inclusion
Scholarly and creative activities
Sustainability

About West Chester University of Pennsylvania

West Chester University offers bachelors and masters degrees in the arts and sciences, teacher training and certification, advanced study preparation in fields such as medicine and law, education for specific professions, and continuing education.

Total enrollment at West Chester University includes 14,567 undergraduate students and 2,960 graduate students. This represents the IPEDS unduplicated headcount. While most undergraduates are recent high school graduates preparing for career objectives, many others are older individuals, including veterans and homemakers, who either never before had the opportunity for a college education or whose schooling was interrupted.

Most students are residents of Pennsylvania but students from other states and foreign countries are welcome. The student body at West Chester University represents a cross section of many ethnic, racial, and religious groups and includes students from all socioeconomic levels.

Like the world around it, West Chester University is constantly transforming. The school continues to broaden and modify the nature and number of its programs to reflect the needs of its students in their endeavor to prepare themselves for success and fulfillment in life.

The History of West Chester University of Pennsylvania

Founded in 1871, West Chester University began as West Chester Academy, a private, state-aided school that existed from 1812 to 1869. The academy enjoyed strong support from the highly intellectual Chester County Cabinet of the Natural Sciences of the pre-Civil War decades. It was recognized as one of Pennsylvania's leading preparatory schools, and its experience in teacher training laid the groundwork for the normal school years that were to follow.

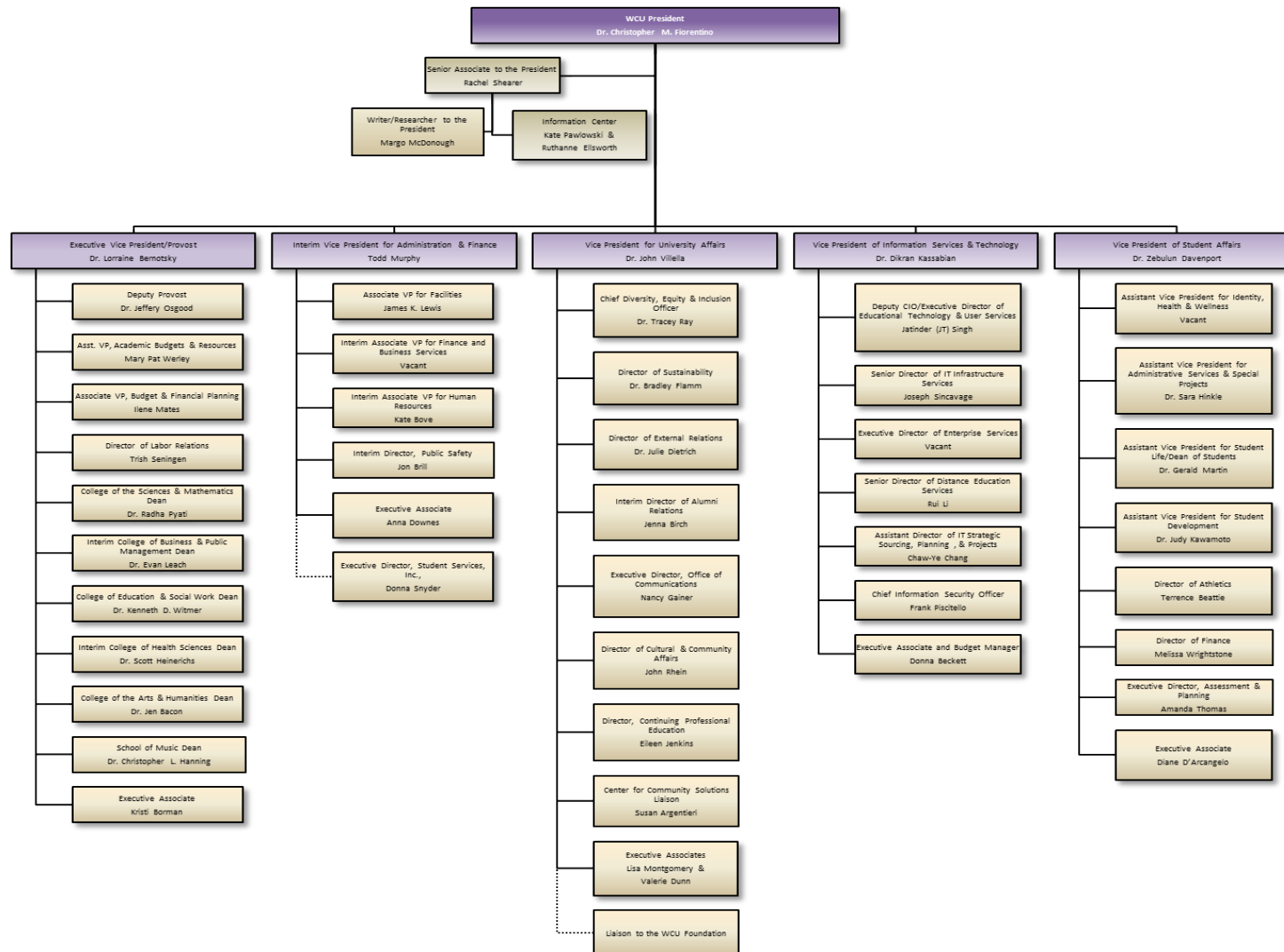
As the state began to take increasing responsibility for public education, the academy was transformed into West Chester Normal School, still privately owned but state certified. The normal school admitted its first class, consisting of 160 students, on September 25, 1871. In 1913, West Chester became the first of the normal schools to be owned outright by the Commonwealth.

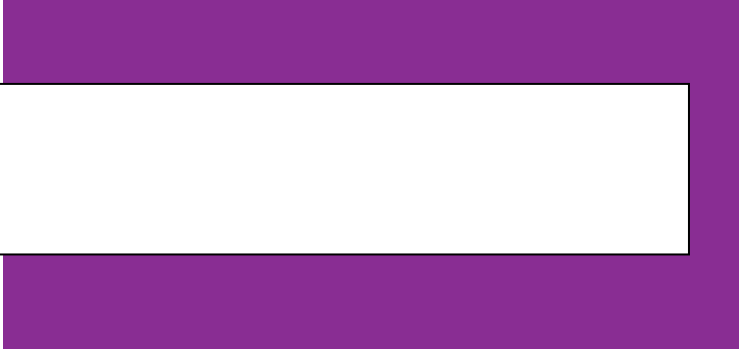
West Chester became West Chester State Teachers College in 1927 when Pennsylvania initiated a four-year program of teacher education. In 1960, as the Commonwealth paved the way for liberal arts programs in its college system, West Chester was renamed West Chester State College, and two years later introduced the liberal arts program that turned the one-time academy into a comprehensive college.

In recognition of the historic merit of the campus, in 1981 the West Chester State College Quadrangle Historic District was placed on the National Register of Historic Places. The buildings included in this historic district are Philips Memorial Building, Ruby Jones Hall, Recitation Hall, and the Old Library. Except for Philips, these buildings are all constructed of native Chester County serpentine stone.

West Chester State achieved another major milestone with passage of the State System of Higher Education bill. West Chester became one of the 14 universities in the State System of Higher Education on July 1, 1983. Along with its new name -- West Chester University of Pennsylvania of the State System of Higher Education -- the institution acquired a new system of governance and the opportunity to expand its degree programs.

Organizational Chart





ADMISSIONS

Undergraduate Admissions Standards

West Chester University prides itself on the holistic approach used in evaluating applicant credentials. Each application is reviewed individually, and we carefully consider scholastic performance and academic preparation to determine an individual's potential for success.

For general admission, as a first-year student, the Office of Admissions requires successful completion of a college preparatory curriculum in high school. Honors and AP level courses are preferred. Minimum requirements also include a grade point average of 3.4 or better, a minimum combined SAT score of 1120 or better, and rank in the top 40% of the class. It is important to realize that these factors are guidelines for consideration. The academic profile of the first year students who enrolled at West Chester University in Fall 2017 is a mean SAT combined score of 1120 (scores used for Admission Decision), a rank in the 40th percentile or top 60%, and a grade point average of 3.38.

Applicants who do not meet regular admissions standards may be considered for a special admissions program if appropriate or denied admission and counseled to enroll at another college or university for a minimum of 24 credits before reapplying as a transfer student.

Transfer applicants must have a minimum grade point average of 2.00 for admissions consideration. The majority of our transfers have a Cumulative GPA of 2.50 or better prior to transferring to the University. Some of our academic programs require a higher grade point average and specific course prerequisites. Pennsylvania Community College students who have earned an Associate of Arts or Associate of Science degree and students who have completed 12 or more transferable credits from a State System University with a 2.00 or above have an Academic Passport that provides entry into any university in the State System of Higher Education. For more information on admissions requirements and the Academic Passport, please contact the Office Admissions at (610) 436-3411 or e-mail ugadmiss@wcupa.edu.

Admission Application Statistics for First Time, First Year Students Fall 2018

Race/Ethnicity	Fall 2017			Fall 2018			Total	
	Male	Female	Total	Male	Female	Total	Change	% Change
African American								
Applied	600	1,036	1,636	490	918	1,408	-228	-13.94%
Accepted	302	495	797	274	531	805	8	1.00%
Enrolled	102	141	243	105	168	273	30	12.35%
Asian								
Applied	154	277	431	152	252	404	-27	-6.26%
Accepted	108	179	287	116	190	306	19	6.62%
Enrolled	24	40	64	31	39	70	6	9.38%
White								
Applied	3,260	5,790	9,050	3,096	5,436	8,532	-518	-5.72%
Accepted	2,428	4,150	6,578	2,444	4,190	6,634	56	0.85%
Enrolled	793	1,226	2,019	783	1,286	2,069	50	2.48%
Hawaiian/Pacific Islander								
Applied	2	7	9	4	2	6	-3	-33.33%
Accepted	2	2	4	3	2	5	1	25.00%
Enrolled	2	0	2	0	0	0	-2	-100.00%
Hispanic or Latino								
Applied	319	610	929	312	635	947	18	1.94%
Accepted	194	393	587	218	454	672	85	14.48%
Enrolled	60	99	159	65	128	193	34	21.38%
Multiracial								
Applied	140	245	385	161	261	422	37	9.61%
Accepted	98	173	271	124	200	324	53	19.56%
Enrolled	40	55	95	59	59	118	23	24.21%
Native American								
Applied	11	15	26	2	15	17	-9	-34.62%
Accepted	4	5	9	1	9	10	1	11.11%
Enrolled	0	3	3	1	3	4	1	33.33%

to be continued.....

These headcounts are unduplicated and reflect the IPEDS unduplicated headcount.

Admission Application Statistics for First Time, First Year Students: Fall 2018 (continued)

Race/Ethnicity	Fall 2017			Fall 2018			Total	
	Male	Female	Total	Male	Female	Total	Change	%Change
Non-Resident Alien								
Applied	9	15	24	14	12	26	2	8.33%
Accepted	5	13	18	6	8	14	-4	-22.22%
Enrolled	1	6	7	1	5	6	-1	-14.29%
Not Supplied								
Applied	71	106	177	111	129	240	63	35.59%
Accepted	51	75	126	80	82	162	36	28.57%
Enrolled	14	24	38	21	23	44	6	15.79%
Total								
Applied	4,566	8,101	12,667	4,342	7,660	12,002	-665	-5.25%
Accepted	3,192	5,485	8,677	3,266	5,666	8,932	255	2.94%
Enrolled	1,036	1,594	2,630	1,066	1,711	2,777	147	5.59%

These headcounts are unduplicated and reflect the IPEDS unduplicated headcount.

First Time, Full Time, First Year Enrolled Students by Gender and Race/Ethnicity: Fall 2018

Race/Ethnicity	Fall 2017			Fall 2018			Total	
	Male	Female	Total	Male	Female	Total	Change	% Change
African American	101	141	242	104	167	271	29	11.98%
Asian	23	40	63	31	39	70	7	11.11%
White	791	1,223	2,014	782	1,283	2,065	51	2.53%
Hawaiian/Pacific Islander	2	0	2	0	0	0	-2	-100.00%
Hispanic or Latino	59	98	157	65	128	193	36	22.93%
Multiracial	40	54	94	59	59	118	24	25.53%
Native American	0	3	3	1	3	4	1	-
Non-Resident Alien	1	6	7	1	5	6	-1	-14.29%
Not Supplied	14	24	38	21	23	44	6	15.79%
Total	1,031	1,589	2,620	1,064	1,707	2,771	151	5.76%

These headcounts are unduplicated and reflect the IPEDS unduplicated headcount.

First Time, Full Time, First Year Students by Admission Type

Admittance Type	2014		2015		2016		2017		2018	
	N	%	N	%	N	%	N	%	N	%
Regular	1,968	84.0%	1,996	83.8%	1,961	80.3%	2,102	80.2%	2,225	80.3%
ADP ACT 101	68	2.9%	75	3.1%	69	2.8%	64	2.4%	61	2.20%
ADP Non-ACT 101	112	4.8%	106	4.5%	123	5.0%	116	4.4%	116	4.19%
Special Admission	196	8.4%	204	8.6%	288	11.8%	338	12.9%	369	13.3%
Total	2,344		2,381		2,441		2,620		2,771	

These headcounts are unduplicated and reflect the IPEDS unduplicated headcount.

Feeder High Schools: Fall 2018

Pennsylvania High Schools With the Most Number of Entering First Year Students

<i>School</i>	<i>#</i>
North Penn High School	43
Downingtown High School East	42
Central Bucks High Sch South	40
Council Rock High School South	38
Garnet Valley High School	37
Coatesville Area Senior High School	37
Downingtown West	36
West Chester Bayard Rustin High School	35
Great Valley High School	34
Avon Grove High School	33
Abington High School	33
Bishop Shanahan High School	31
Haverford High School	30
Pennsbury High School	30
B Reed Henderson High School	30
Neshaminy High School	29
West Chester East High School	28
Boyertown Area Senior High School	28
Owen J Roberts High School	27
Cumberland Valley High School	26
Conestoga High School	26
Oxford Area High School	25
Central Bucks High School East	25
Unionville High School	24
Spring-Ford Senior High School	24

<i>School</i>	<i>#</i>
Methacton High School	23
Central Bucks High School West	23
Kennett High School	22
Central York High School	22
Parkland High School	22
Marple Newtown High School	22
Perkiomen Valley High School	21
Archbishop Wood High School	21
Archbishop Carroll High School	21
Plymouth Whitemarsh High School	21
Upper Darby High School	20
Cheltenham High School	20
Ridley High School	19
Sun Valley High School	19
Wilson High School	19
Cardinal O'Hara High School	19
Hatboro-Horsham High School	19
Manalapan High School	18
Springfield High School	18
Phoenixville Area High School	18
Council Rock High School North	18
Hempfield High School	17
Upper Merion Area High School	17
Monsignor Bonner-Archb Pren High School	16
Pennridge High School	16

<i>School</i>	<i>#</i>
Manheim Township High School	16
Twin Valley High School	16
Souderton Area High School	15
Penncrest High School	15
Lansdale Catholic High School	14
Strath Haven High School	13
Delaware Valley High School	13
Daniel Boone Area High School	12
Dallastown Area High School	12
Hazleton Area High School	12
Upper Dublin High School	12
Emmaus High School	12
Wissahickon High School	11
Pottsgrove High School	11
Interboro High School	11
Southern Lehigh High School	11
Lower Moreland High School	10
Bishop McDevitt High School	10
Hershey High School	10
Norristown Area High School	10
Wyomissing Area High School	10
John W Hallahan Catholic High School	10
Springfield Township High School	10
Upper Moreland High School	10
Central High School	10

These headcounts are unduplicated and reflect the IPEDS unduplicated headcount.

Feeder Colleges: Fall 2018

Institutions Previously Attended With the Most Number of New Fall Undergraduate Transfer Students

[Excludes students who transitioned from non-degree to degree as well as Transfers with first degree at WCU]

Name	Count	Percent	Type	State
Delaware County Community College	315	25.5%	2 Year Public	PA
Montgomery County Community College	152	12.3%	2 Year Public	PA
Community College Of Philadelphia	72	5.8%	2 Year Public	PA
Bucks County Community College	59	4.8%	2 Year Public	PA
Pennsylvania St Univ. University Park	44	3.6%	2 Year Public	PA
Harrisburg Area Community College	38	3.1%	4 Year Public	PA
Northampton County Area Community College	22	1.8%	4 Year Public	PA
Indiana University of Pennsylvania	19	1.5%	4 Year Public	PA
Bloomsburg University of Pennsylvania	18	1.5%	4 Year Public	PA
East Stroudsburg University of Pennsylvania	18	1.5%	4 Year Public	PA
Temple University	17	1.4%	2 Year Public	PA
Kutztown University of Pennsylvania	14	1.1%	4 Year Public	PA
Reading Area Community College	13	1.1%	2 Year Public	PA
Shippensburg University of Pennsylvania	13	1.1%	4 Year Public	PA
Millersville University of Pennsylvania	11	0.9%	4 Year Public	PA
Lehigh Carbon Community College	9	0.7%	4 Year Public	PA
Lock Haven University of Pennsylvania	7	0.6%	4 Year Public	PA
Gwynedd-Mercy University	7	0.6%	4 Year Private	PA
York College of PA	7	0.6%	4 Year Public	PA
Immaculata University	7	0.6%	4 Year Private	PA
Saint Joseph'S University	7	0.6%	4 Year Private	PA
Brookdale Community College	6	0.5%	2 Year Public	NJ
Widener University	6	0.5%	4 Year Private	PA
Neumann University	6	0.5%	2 Year Public	PA
Cabrini University	6	0.5%	4 Year Public	PA
In-State Generic College	6	0.5%	--	--
Drexel University	6	0.5%	4 Year Private	PA
Harcum College	6	0.5%	2 Year Private	PA
West Virginia University Morgantown	6	0.5%	4 Year Private	WV
Slippery Rock University of Pennsylvania	6	0.5%	4 Year Public	PA
International College	5	0.4%	--	--
University of Delaware	5	0.4%	4 Year Public	DE
Coastal Carolina University	5	0.4%	4 Year Public	SC
La Salle University of Pennsylvania	5	0.4%	4 Year Public	PA
Rowan College at Burlington County	5	0.4%	2 Year Public	NJ
All Military	4	0.3%	4 Year Public	--
Loyola University Maryland	4	0.3%	4 Year Private	MD
University of Pittsburgh, Johnstown	4	0.3%	4 Year Public	PA
University of Pittsburgh, Pittsburgh	4	0.3%	4 Year Public	PA
Cheyney University of Pennsylvania	4	0.3%	4 Year Public	PA
Rowan University	4	0.3%	4 Year Public	NJ
Alvernia University	4	0.3%	2 Year Public	PA
Luzerne County Community College	4	0.3%	2 Year Public	PA
Lackawanna College	4	0.3%	4 Year Private	PA
Kings College	4	0.3%	4 Year Private	PA
Eastern University	4	0.3%	2 Year Public	PA
Arcadia University	4	0.3%	4 Year Private	PA
Desales University	4	0.3%	4 Year Private	PA
Out-of-State Generic College	3	0.2%	--	--
Community College of Allegheny County	3	0.2%	2 Year Public	PA
Camden County College	3	0.2%	2 Year Public	NJ
Geneva College	3	0.2%	4 Year Private	PA
Gettysburg College	3	0.2%	4 Year Private	PA
Keystone College	3	0.2%	4 Year Private	PA
Middlesex County College	3	0.2%	2 Year Public	NJ
Mansfield University of Pennsylvania	3	0.2%	4 Year Public	PA
Pennsylvania Institute of Technology	3	0.2%	2 Year Private	PA
Rutgers University	3	0.2%	4 Year Public	NJ
University Of Scranton	3	0.2%	4 Year Private	PA
Catholic University of America	3	0.2%	4 Year Private	DC
Delaware Technical Community College, Newark	3	0.2%	2 Year Public	DE
High Point University	3	0.2%	4 Year Private	NC
University of South Carolina Columbia	3	0.2%	4 Year Public	SC
University Of Tampa	3	0.2%	4 Year Private	FL

These headcounts are unduplicated and reflect the IPEDS unduplicated headcount.

First Time, First Year Student Enrollment by Pennsylvania County: Fall 2018

Top 10 Counties* with Most Enrollments Ranked

County	Total	Percent	Rank
Adams	9	0.32%	
Allegheny	10	0.36%	
Armstrong	0	0.00%	
Beaver	2	0.07%	
Bedford	0	0.00%	
Berks	108	3.89%	6
Blair	0	0.00%	
Bradford	1	0.04%	
Bucks	304	10.95%	4
Butler	0	0.00%	
Cambria	2	0.07%	
Cameron	0	0.00%	
Carbon	5	0.18%	
Centre	5	0.18%	
Chester	488	17.57%	1
Clarion	1	0.04%	
Clearfield	1	0.04%	
Clinton	0	0.00%	
Columbia	3	0.11%	
Crawford	1	0.04%	
Cumberland	55	1.98%	10
Dauphin	54	1.94%	
Delaware	306	11.02%	3

County	Total	Percent	Rank
Elk	0	0.00%	
Erie	0	0.00%	
Fayette	0	0.00%	
Franklin	3	0.11%	
Fulton	0	0.00%	
Greene	0	0.00%	
Huntingdon	0	0.00%	
Indiana	1	0.04%	
Jefferson	0	0.00%	
Juniata	1	0.04%	
Lackawanna	36	1.30%	
Lancaster	91	3.28%	8
Lawrence	0	0.00%	
Lebanon	11	0.40%	
Lehigh	65	2.34%	9
Luzern	21	0.76%	
Lycoming	5	0.18%	
McKean	0	0.00%	
Mercer	0	0.00%	
Mifflin	0	0.00%	
Monroe	23	0.83%	
Montgomery	404	14.55%	2
Montour	3	0.11%	

County	Total	Percent	Rank
Northampton	41	1.48%	
Northumberland	4	0.14%	
Perry	0	0.00%	
Philadelphia	193	6.95%	5
Pike	16	0.58%	
Potter	0	0.00%	
Schuylkill	20	0.72%	
Snyder	3	0.11%	
Somerset	0	0.00%	
Sullivan	1	0.04%	
Susquehanna	2	0.07%	
Tioga	1	0.04%	
Union	3	0.11%	
Venango	0	0.00%	
Warren	0	0.00%	
Washington	2	0.07%	
Wayne	5	0.18%	
Westmoreland	0	0.00%	
Wyoming	2	0.07%	
York	94	3.38%	7
Out of State	342	12.32%	
Out of Country	29	1.04%	
Total	2,777	100.00%	

*County at the time of admission.

These headcounts are unduplicated and reflect the IPEDS unduplicated headcount.

First Time, Full Time, First Year Student Enrollment by State: Fall 2018

Top 10 States* with Most Enrollments Ranked

State	Total	Percent	Rank
Alabama	0	0.00%	
Alaska	0	0.00%	
Arizona	0	0.00%	
Arkansas	0	0.00%	
California	1	0.04%	7(t)
Colorado	0	0.00%	
Connecticut	0	0.00%	
Delaware	48	1.73%	3
District of Columbia	0	0.00%	
Florida	0	0.00%	
Georgia	0	0.00%	
Hawaii	0	0.00%	
Idaho	0	0.00%	
Illinois	1	0.04%	7(t)
Indiana	0	0.00%	
Iowa	0	0.00%	
Kansas	0	0.00%	
Kentucky	0	0.00%	
Louisiana	0	0.00%	
Maine	1	0.04%	7(t)
Maryland	13	0.47%	4
Massachusetts	3	0.11%	6(t)
Michigan	1	0.04%	7(t)
Minnesota	0	0.00%	
Mississippi	0	0.00%	
Missouri	0	0.00%	
Montana	0	0.00%	

State	Total	Percent	Rank
Nebraska	0	0.00%	
Nevada	0	0.00%	
New Hampshire	0	0.00%	
New Jersey	255	9.20%	2
New Mexico	0	0.00%	
New York	10	0.36%	5
North Carolina	0	0.00%	
North Dakota	0	0.00%	
Ohio	1	0.04%	7(t)
Oklahoma	0	0.00%	
Oregon	0	0.00%	
Pennsylvania	2,401	86.65%	1
Rhode Island	1	0.04%	7(t)
South Carolina	1	0.04%	7(t)
South Dakota	0	0.00%	
Tennessee	0	0.00%	
Texas	1	0.04%	7(t)
Utah	0	0.00%	
Vermont	0	0.00%	
Virginia	3	0.11%	6(t)
Washington	0	0.00%	
West Virginia	1	0.04%	7(t)
Wisconsin	0	0.00%	
Wyoming	0	0.00%	
Armed Forces	0	0.00%	
International	29	1.05%	
Total	2,771	100.00%	

*State at the time of admission.

These headcounts are unduplicated and reflect the IPEDS unduplicated headcount.

Admission Yield Statistics

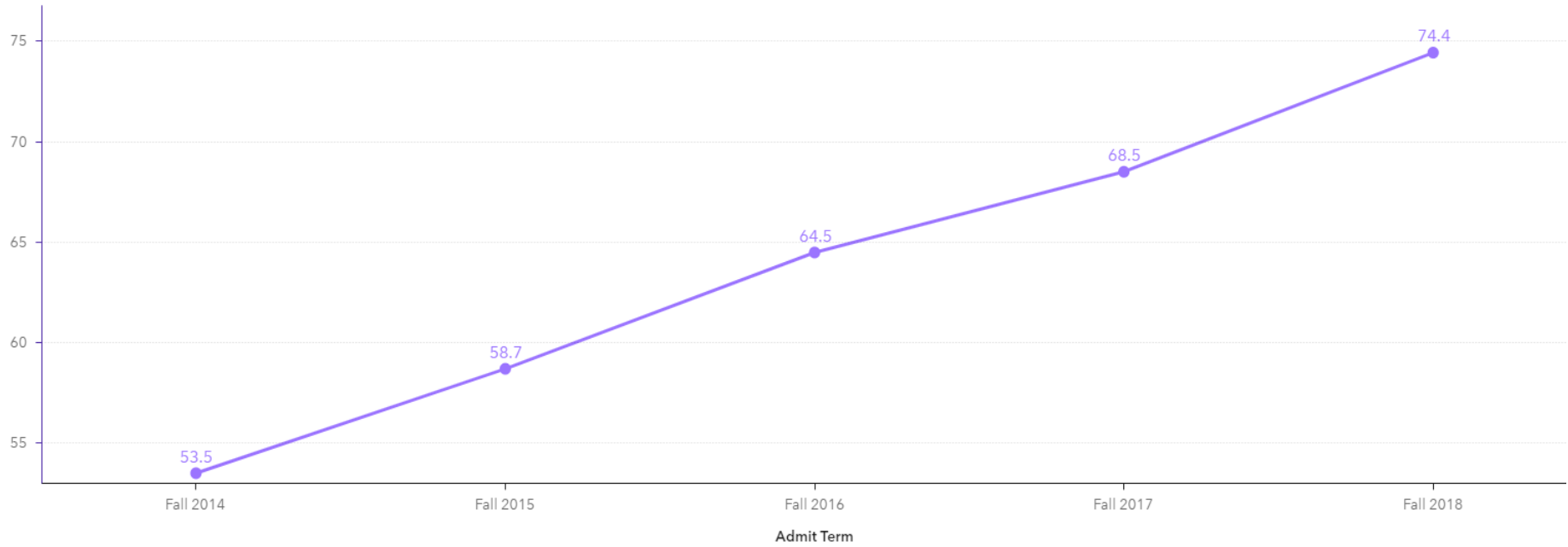
First-Time, First Year Student Admission Yield

Year	# of Applicants	# Accepted	% Accepted	# Enrolled	% Accepted Full-Time	% of Applicants
2008	11,181	6,317	47.2	2,002	31.5	14.9
2009	11,534	6,667	49.0	2,248	33.6	16.5
2010	14,009	6,267	41.5	2,067	32.9	13.6
2011	14,097	7,013	46.5	2,292	32.6	15.1
2012	13,365	7,161	49.9	2,334	32.5	16.2
2013	13,438	6,922	51.5	2,298	33.1	17.1
2014*	13,291	7,108	53.5	2,351	33.0	17.6
2015*	12,624	7,408	58.7	2,395	32.3	19.0
2016*	12,604	8,127	64.5	2,454	30.2	19.5
2017*	12,667	8,677	68.5	2,630	30.3	20.8
2018*	12,002	8,932	74.4	2,777	31.1	23.1
5-YR Change	-10.7%	29.0%		20.8%		
1-YR Change	-5.2%	2.9%		5.6%		
5-YR Difference			22.90		-2.01	6.00
1-YR Difference			5.90		0.80	2.30

*Starting Fall 2014, number of applicants includes completed applications only.

These headcounts are unduplicated and reflect the IPEDS unduplicated headcount.

First Time, First Year Admission Yield



Starting Fall 2014, number of applicants includes completed applications only.

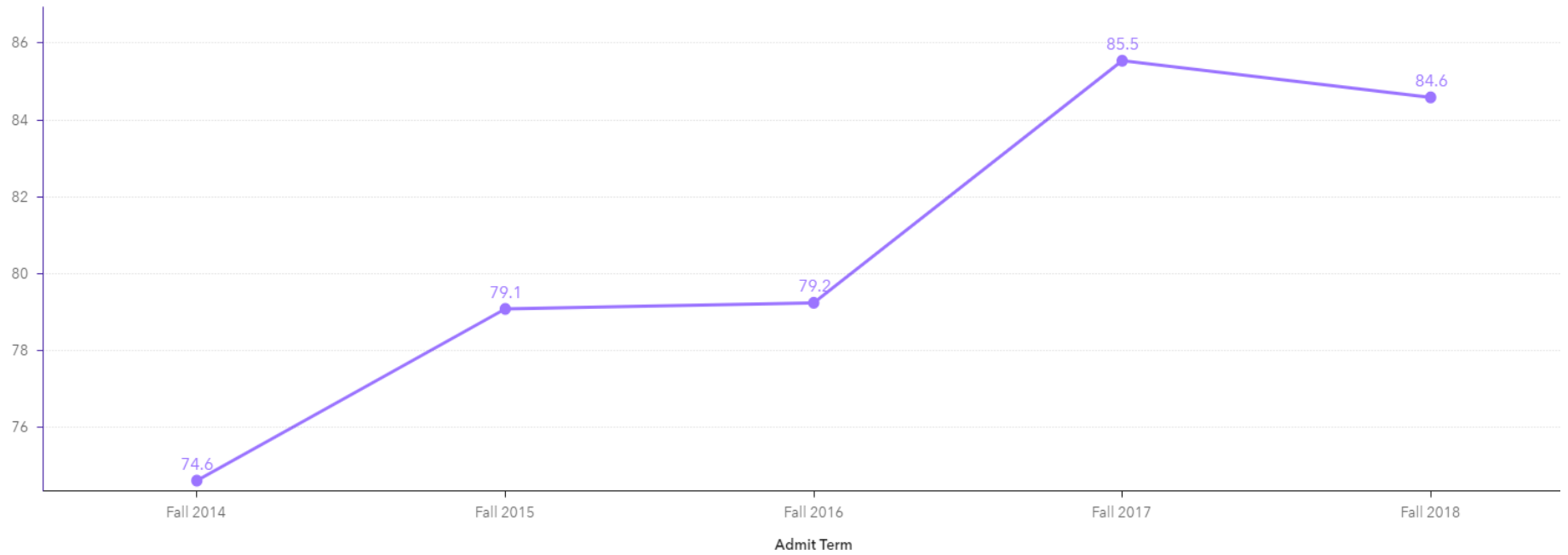
First Time Transfer Admission Yield

Year	# of Applicants	# Accepted	% Accepted	# Enrolled	% of Accepted Enrolled	% of Applicants Enrolled
2009	3,639	1,821	50.0	1,176	64.6	32.3
2010	3,607	1,920	53.2	1,241	64.6	34.4
2011	3,742	2,029	54.2	1,276	62.9	34.1
2012	3,678	2,057	55.9	1,316	64	35.8
2013	2,883	2,003	69.5	1,350	67.9	46.8
2014*	2,762	2,061	74.6	1,331	64.6	48.2
2015*	2,649	2,095	79.1	1,415	67.5	53.4
2016*	2,703	2,142	79.2	1,457	68.0	53.9
2017*	2,400	2,048	85.3	1,332	65.0	55.5
2018*	2,297	1,942	84.5	1,265	65.1	55
5-YR Change	-20.3%	-3.0%		-6.3%		
1-YR Change	-4.3%	-5.2%		-5.0%		
5-YR Difference			15.00		-2.80	8.30
1-YR Difference			-0.83		0.06	-0.40

*Starting Fall 2014, number of applicants includes completed applications only.

These headcounts are unduplicated and reflect the IPEDS unduplicated headcount.

First Time Transfer Admission Yield



Starting Fall 2014, number of applicants includes completed applications only.



ENROLLMENT

Head Count Enrollment by Gender and Race/Ethnicity: Fall 2018

Gender	Undergraduate		Graduate		Total*
	Full-Time	Part-time	Full-Time	Part-time	
Male	5,269	703	300	673	6,945
Female	7,791	804	719	1,268	10,582
Total	13,060	1,507	1,019	1,941	17,527

Ethnicity	Undergraduate		Graduate		Total*
	Full-Time	Part-time	Full-Time	Part-time	
African American	1,414	236	181	206	2,037
Native American	20	0	0	2	22
Asian	301	64	23	62	450
Caucasian	9,848	1,044	670	1,535	13,097
Hawaiian/Pacific Islander	7	2	0	0	9
Hispanic	777	91	47	58	973
Non-Resident Alien	69	2	44	15	130
Multiracial	477	38	36	31	582
Not Supplied	147	30	18	32	227
Total	13,060	1,507	1,019	1,941	17,527

These headcounts are unduplicated and reflect the IPEDS unduplicated headcount.

Head Count Enrollment by Degree Status and College: Fall 2018

Degree Status	Undergraduate		Graduate		Total*
	Full-Time	Part-time	Full-Time	Part-time	
Degree Seeking	13,031	1,205	974	1,707	16,917
Non-degree Seeking	29	302	45	234	610
Total	13,060	1,507	1,019	1,941	17,527

College	Undergraduate		Graduate		Total*
	Full-Time	Part-time	Full-Time	Part-time	
Arts & Humanities	1,298	117	63	119	1,597
Business and Public Management	3,791	303	161	710	4,965
Education & Social Work	1,213	100	407	646	2,366
Health Sciences	2,110	286	257	198	2,851
Science & Mathematics	2,606	267	108	178	3,159
Interdisciplinary & Graduate Studies	1,718	412	3	50	2,183
School of Music	324	22	20	40	406
Total	13,060	1,507	1,019	1,941	17,527

These headcounts are unduplicated and reflect IPEDS unduplicated headcount.

Interdisciplinary & Graduate Studies include non-degree and undeclared major students.

Enrollment by State at the Time of Admission: Fall 2015 to Fall 2018

State	Fall 2015			Fall 2016			Fall 2017			Fall 2018		
	UG	G	Total	UG	G	Total	UG	G	Total	UG	G	Total
Alabama	0	0	0	1	1	2	1	1	2	0	2	2
Alaska	1	0	1	1	0	1	1	0	1	0	0	0
Arizona	1	1	2	1	1	2	1	1	2	1	2	3
Arkansas	0	0	0	0	0	0	0	0	0	0	2	2
California	9	4	13	9	8	17	7	11	18	5	8	13
Colorado	0	0	0	0	0	0	1	0	1	2	1	3
Connecticut	6	1	7	6	1	7	6	4	10	7	4	11
Delaware	170	44	214	168	47	215	162	61	223	164	56	220
Florida	4	3	7	6	4	10	11	10	21	7	8	15
Georgia	1	0	1	0	1	1	2	5	7	2	7	9
Hawaii	2	0	2	2	0	2	1	0	1	0	0	0
Idaho	0	1	1	0	0	0	0	0	0	0	0	0
Illinois	0	0	0	0	1	1	1	3	4	3	4	7
Indiana	0	1	1	0	0	0	0	1	1	0	2	2
Iowa	2	0	2	1	0	1	0	0	0	0	0	0
Kansas	0	0	0	0	0	0	0	1	1	0	1	1
Kentucky	0	1	1	0	2	2	1	1	2	1	1	2
Louisiana	1	1	2	1	0	1	1	0	1	1	1	2
Maine	1	1	2	1	1	2	1	1	2	2	2	4
Maryland	81	14	95	87	20	107	80	29	109	69	27	96
Massachusetts	4	4	8	4	2	6	4	4	8	5	7	12
Michigan	4	0	4	3	1	4	2	0	2	2	1	3
Minnesota	1	1	2	0	3	3	0	3	3	0	0	0
Missouri	0	0	0	0	1	1	0	1	1	0	0	0
Montana	0	0	0	0	1	1	1	1	2	1	0	1
Nevada	1	1	2	1	0	1	1	0	1	1	0	1
New Hampshire	2	1	3	2	0	2	2	0	2	2	1	3
New Jersey	1,355	60	1,415	1,273	74	1,347	1,188	91	1,279	1,135	98	1,233
New Mexico	1	0	1	1	1	2	0	0	0	0	3	3
New York	59	9	68	60	14	74	55	18	73	49	21	70
North Carolina	3	5	8	1	7	8	2	5	7	0	6	6
North Dakota	1	0	1	1	0	1	1	0	1	0	0	0

to be continued.....

These headcounts are unduplicated and reflect the IPEDS unduplicated headcount.

Enrollment by State at the Time of Admission: Fall 2015 to Fall 2018 (continued)

STATE	Fall 2015			Fall 2016			Fall 2017			Fall 2018		
	UG	G	Total	UG	G	Total	UG	G	Total	UG	G	Total
Ohio	1	0	1	2	6	8	4	7	11	6	6	12
Oklahoma	0	0	0	0	0	0	0	1	1	0	0	0
Oregon	0	1	1	0	0	0	0	0	0	0	0	0
Pennsylvania	12,409	2,137	14,546	12,686	2,348	15,034	12,841	2,528	15,369	12,761	2,500	15,261
Rhode Island	1	0	1	1	0	1	2	1	3	4	1	5
South Carolina	1	1	2	2	2	4	4	3	7	4	3	7
Tennessee	0	0	0	0	0	0	0	2	2	0	3	3
Texas	3	2	5	4	9	13	2	10	12	3	15	18
Utah	0	0	0	0	1	1	0	2	2	0	2	2
Vermont	0	0	0	1	0	1	1	1	2	1	1	2
Virginia	16	8	24	16	9	25	15	10	25	12	11	23
Washington	0	0	0	0	2	2	0	1	1	0	0	0
Washington D.C.	1	2	3	1	1	2	1	2	3	0	1	1
West Virginia	1	0	1	1	0	1	1	2	3	1	2	3
Wisconsin	0	2	2	1	1	2	1	4	5	1	5	6
Armed Forces	0	0	0	0	1	1	0	3	3	0	2	2
International	69	79	148	52	37	89	45	26	71	315	142	457
Other/Unknown	0	0	0	0	0	0	1	0	1	0	1	1
TOTAL	14,212	2,385	16,597	14,397	2,608	17,005	14,451	2,855	17,306	14,567	2,960	17,527
In-State	12,409	2,137	14,546	12,686	2,348	15,034	12,841	2,528	15,369	12,761	2,500	15,261
Out-of-State	1,803	248	2,051	1,711	260	1,971	1,610	327	1,937	1,806	460	2,266
Out-of-State %	12.69%	10.40%	12.36%	11.88%	9.97%	11.59%	11.14%	11.45%	11.19%	12.40%	15.54%	12.93%

These headcounts are unduplicated and reflect the IPEDS unduplicated headcount.

Enrollment by County for Pennsylvania Residents: Fall 2018

Top 10 Counties* With Most Enrollments Ranked

County	Total	Percent	Rank
Adams	51	0.33%	
Allegheny	55	0.36%	
Armstrong	0	0.00%	
Beaver	5	0.03%	
Bedford	0	0.00%	
Berks	546	3.58%	6
Blair	2	0.01%	
Bradford	12	0.08%	
Bucks	1,470	9.63%	4
Butler	7	0.05%	
Cambria	6	0.04%	
Cameron	0	0.00%	
Carbon	26	0.17%	
Centre	18	0.12%	
Chester	4,059	26.60%	1
Clarion	3	0.02%	
Clearfield	3	0.02%	
Clinton	2	0.01%	
Columbia	19	0.12%	
Crawford	4	0.03%	
Cumberland	243	1.59%	
Dauphin	230	1.51%	
Delaware	2,624	17.19%	2
Elk	0	0.00%	

County	Total	Percent	Rank
Erie	5	0.03%	
Fayette	1	0.01%	
Franklin	25	0.16%	
Fulton	1	0.01%	
Greene	0	0.00%	
Huntingdon	2	0.01%	
Indiana	3	0.02%	
Jefferson	0	0.00%	
Juniata	1	0.01%	
Lackawanna	202	1.32%	
Lancaster	465	3.05%	7
Lawrence	1	0.01%	
Lebanon	65	0.43%	
Lehigh	322	2.11%	9
Luzerne	118	0.77%	
Lycoming	19	0.12%	
McKean	2	0.01%	
Mercer	2	0.01%	
Mifflin	2	0.01%	
Monroe	96	0.63%	
Montgomery	2,249	14.74%	3
Montour	7	0.05%	
Northampton	280	1.83%	10
Northumberland	24	0.16%	

County	Total	Percent	Rank
Perry	9	0.06%	
Philadelphia	1,431	9.38%	5
Pike	53	0.35%	
Potter	1	0.01%	
Schuylkill	72	0.47%	
Snyder	10	0.07%	
Somerset	1	0.01%	
Sullivan	4	0.03%	
Susquehanna	14	0.09%	
Tioga	6	0.04%	
Union	8	0.05%	
Venango	0	0.00%	
Warren	1	0.01%	
Washington	3	0.02%	
Wayne	27	0.18%	
Westmoreland	7	0.05%	
Wyoming	11	0.07%	
York	325	2.13%	8
Not available	1	0.01%	
Total	15,261	100.00%	

*County at the time of admission.

These headcounts are unduplicated and reflect the IPEDS unduplicated headcount.

Head Count Enrollment: Fall 2014 to 2018

Five-Year Enrollment by Ethnicity and Gender

Undergraduate Students

Ethnicity	2014		2015		2016		2017		2018	
	Male	Female	Male	Female	Male	Female	Male	Female	Male	Female
White	4,457	6,571	4,519	6,541	4,533	6,485	4,549	6,365	4,538	6,354
African American	492	857	575	914	595	1022	603	1027	599	1051
Hispanic	286	404	314	448	345	446	345	486	341	527
Asian	118	176	118	187	126	202	143	214	147	218
Hawaiian/Pacific Islander	2	12	7	10	8	8	8	6	5	4
Native American	3	11	1	13	2	12	3	14	5	15
NRA-International	20	21	25	43	24	43	19	44	26	45
Multiracial	145	218	167	242	176	263	207	278	231	284
Not Supplied	24	27	36	52	51	56	59	81	80	97
Total	5,547	8,297	5,762	8,450	5,860	8,537	5,936	8,515	5,972	8,595

Graduate Students

Ethnicity	2014		2015		2016		2017		2018	
	Male	Female	Male	Female	Male	Female	Male	Female	Male	Female
White	539	1,142	511	1,285	597	1,366	709	1,447	735	1,470
African American	86	209	86	233	102	274	115	271	108	279
Hispanic	18	49	20	56	21	64	29	74	31	74
Asian	18	44	15	47	21	38	35	47	40	45
Hawaiian/Pacific Islander	3	0	0	0	1	1	0	0	0	0
Native American	1	3	0	2	0	1	0	0	1	1
NRA-International	39	46	34	50	25	37	21	35	22	37
Multiracial	13	19	9	28	8	32	13	40	15	52
Not Supplied	4	9	4	5	8	12	7	12	21	29
Total	721	1,521	679	1,706	783	1,825	929	1,926	973	1,987

These headcounts are unduplicated and reflect the IPEDS unduplicated headcount.

Head Count Enrollment: Fall 2014 to 2018 Enrollment by College

Undergraduate Students

College	2014	2015	2016	2017	2018
Arts & Humanities	1,658	1,591	1,498	1,516	1,415
Business and Public Management	2,910	3,361	3,655	3,922	4,094
Education & Social Work	1,301	1,232	1,283	1,274	1,313
Health Sciences	2,572	2,631	2,644	2,548	2,396
Science & Mathematics	2,770	2,910	2,920	2,941	2,873
Interdis & Grad Studies	2,259	2,126	2,022	1,915	2,130
School of Music	374	361	375	335	346
Total	13,844	14,212	14,397	14,451	14,567

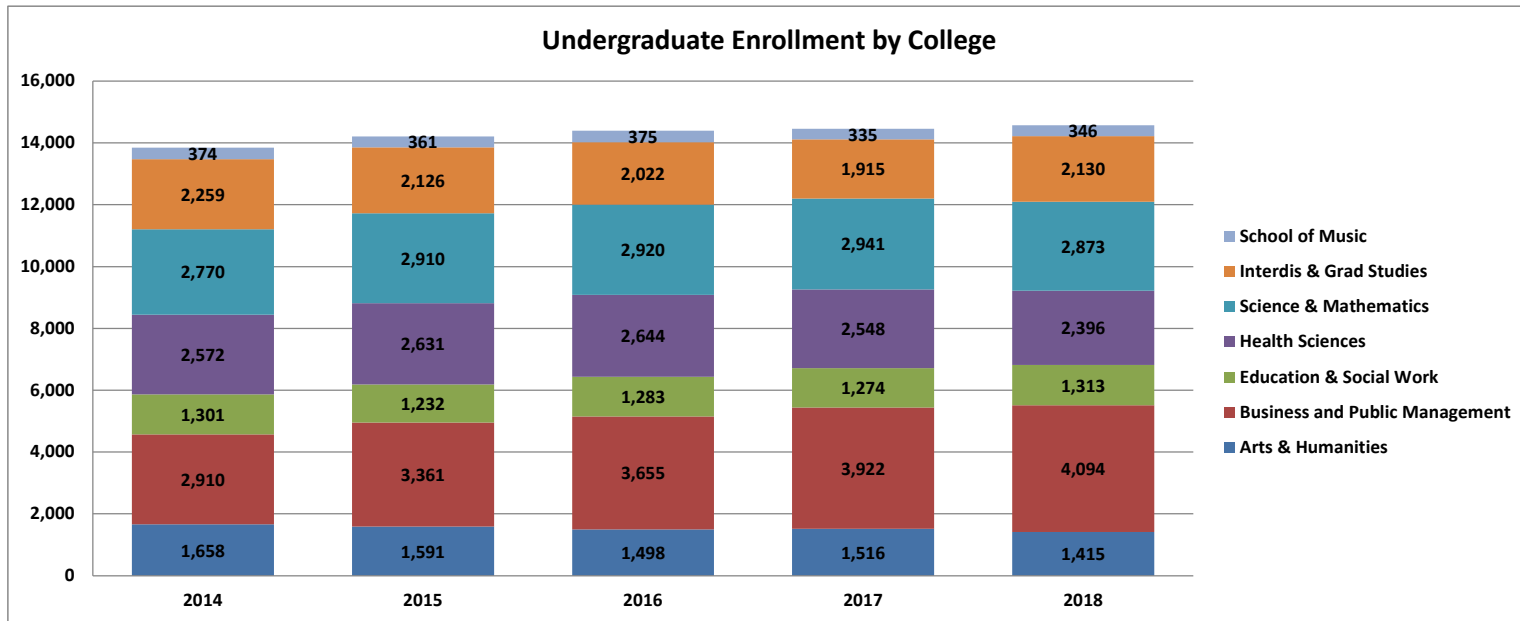
Graduate Students

College	2014	2015	2016	2017	2018
Arts & Humanities	180	183	188	200	182
Business and Public Management	343	370	549	754	871
Education & Social Work	798	907	966	1009	1,053
Health Sciences	370	413	440	465	455
Science & Mathematics	315	322	304	274	286
Interdis & Grad Studies	167	127	103	99	53
School of Music	69	63	58	54	60
Total	2,242	2,385	2,608	2,855	2,960

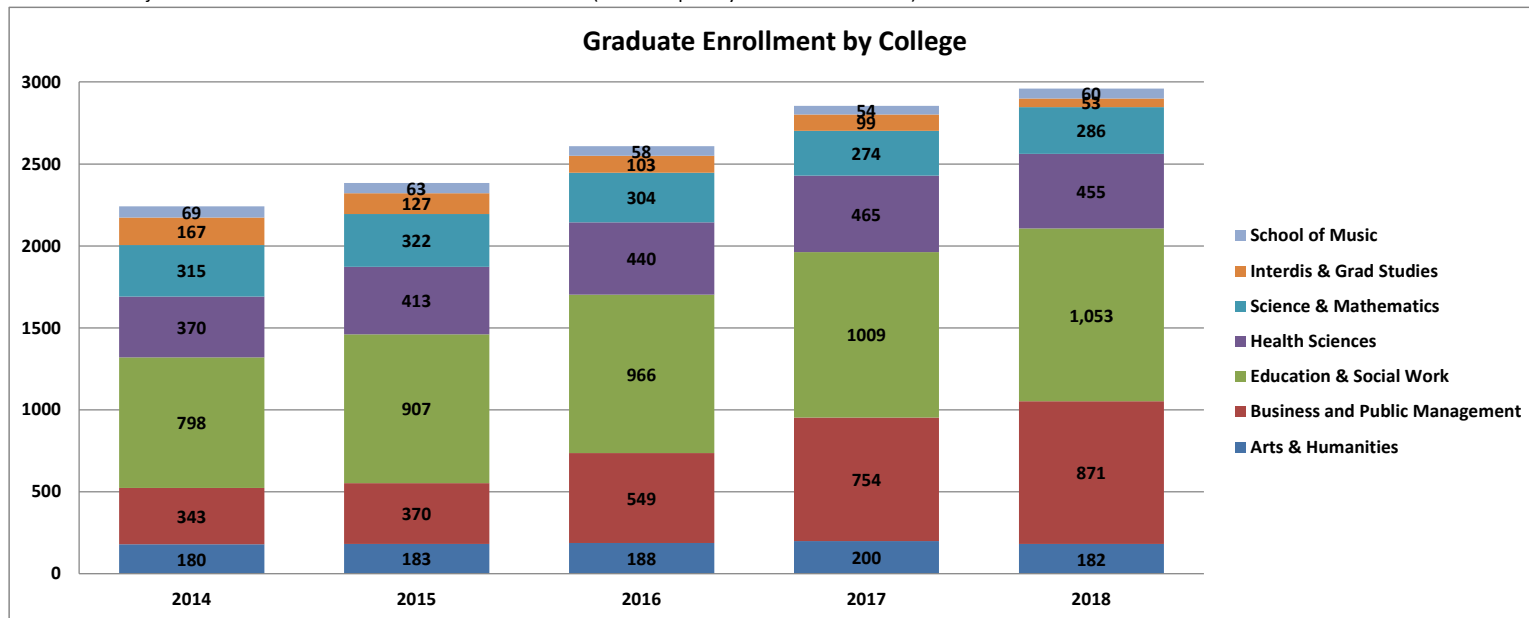
* Interdis & Grad Studies (Interdisciplinary & Graduate Studies) include non-degree and undeclared major students.

These headcounts are unduplicated and reflect the IPEDS unduplicated headcount.

Head Count Enrollment: Fall 2014 to 2018 Enrollment by College : Five Falls



Note: Non-degree and undeclared major students are included in Interdis & Grad Studies (Interdisciplinary & Graduate Studies).

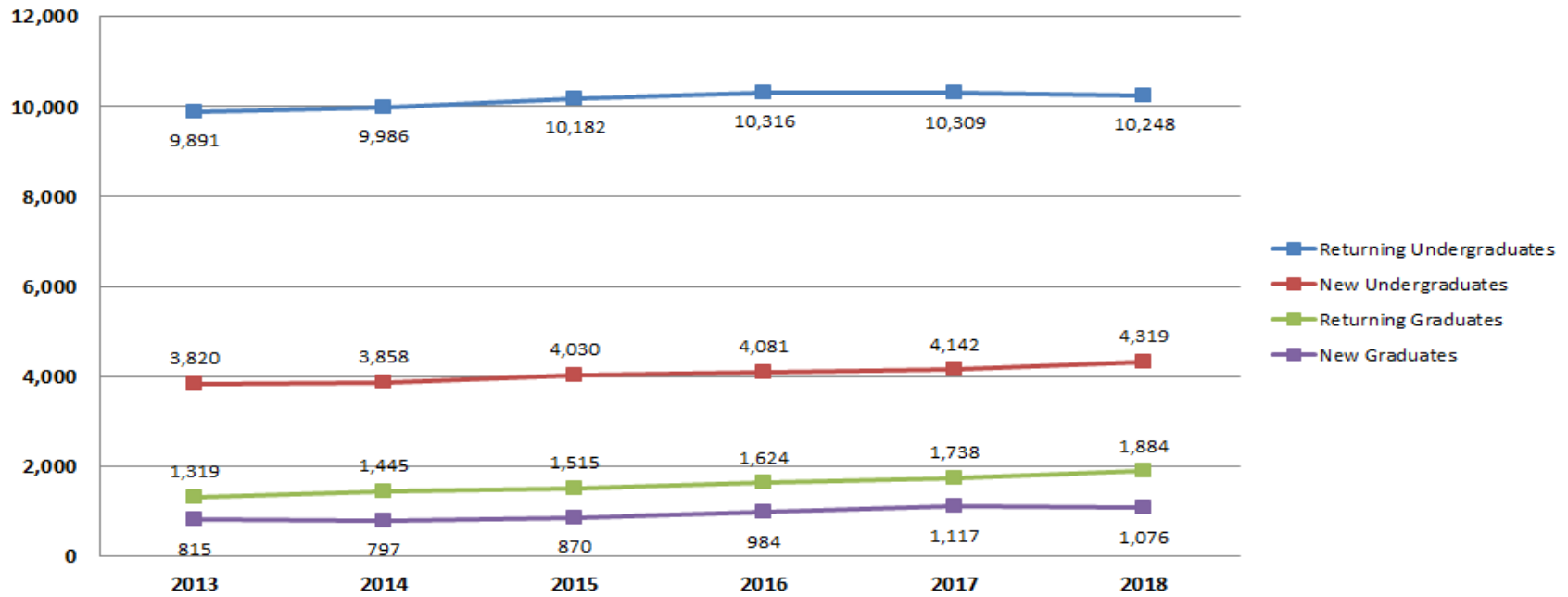


Head Count Enrollment by Student Level: Fall 2013 to Fall 2018

Fall Semester	2013	2014	2015	2016	2017	2018	One Year Difference
Undergraduate							
New First Year Degree Seeking	2,298	2,351	2,395	2,454	2,630	2,777	147
New Transfer Degree Seeking	1,349	1,331	1,415	1,457	1,332	1,265	-67
New Readmits Degree Seeking	76	107	100	56	73	67	-6
New Undergraduate Non Degree	97	69	120	114	107	210	103
Returning Undergraduate Degree Seeking First Year	657	555	596	573	663	666	3
Returning Undergraduate Degree Seeking Sophomore	2,585	2,650	2,616	2,671	2,611	2,719	108
Returning Undergraduate Degree Seeking Junior	2,912	2,969	3,087	3,052	2,976	2,904	-72
Returning Undergraduate Degree Seeking Senior	3,579	3,647	3,738	3,859	3,917	3,838	-79
Returning Undergraduate Non Degree	158	165	145	161	142	121	-21
Graduate							
New Masters	621	612	686	770	896	887	-9
New Doctorate	-	17	38	74	69	71	2
New Graduate Non Degree	194	168	146	140	152	118	-34
Returning Masters	1,132	1,211	1,287	1,357	1,462	1,615	153
Returning Doctorate	-	15	40	72	107	108	1
Returning Graduate Non Degree	187	219	188	195	169	161	-8
Total Enrollment	15,845	16,086	16,597	17,005	17,306	17,527	221

These headcounts are unduplicated and reflect the IPEDS unduplicated headcount.

Headcount Enrollment by Student Level Fall 2013-2018



Annual Course Credit Hours and Student FTE Enrollment FY 2013-14 to FY 2017-18

Student FTE Enrollment: FY 2013-14 to FY 2017-18

FTE Division	2013-14	2014-15	2015-16	2016-17	2017-18	One Year Difference
Lower Division Full-Time Equivalent Students	8,184.6	8,277.9	8,458.2	8,386.1	8,478.7	92.6
Upper Division Full-Time Equivalent Students	5,179.0	5,283.4	5,356.9	5,480.7	5,522.3	41.6
Graduate Division Full-Time Equivalent Students	1,466.8	1,566.9	1,620.0	1,755.3	1,889.5	134.2
Total Full-Time Equivalent Students	14,830.4	15,128.2	15,435.1	15,622.1	15,890.5	268.4

Annual Course Credit Hours: FY 2013-14 to FY 2017-18

Credit Hours by Course Division	2013-14	2014-15	2015-16	2016-17	2017-18	One Year Difference
Lower Division Course Credit Hours	245,538.0	248,336.5	253,747.0	251,582.0	254,360.0	2,778.0
Upper Division Course Credit Hours	155,369.0	158,501.5	160,707.5	164,420.5	165,667.5	1,247.0
Graduate Division Course Credit Hours	35,202.0	37,606.0	38,879.0	42,127.0	45,349.0	3,222.0
Total University Course Credit Hours	436,109.0	444,444.0	453,333.5	458,129.5	465,376.5	7,247.0



RETENTION AND GRADUATION

Retention and Graduation Rates for First-time, Full-Time, First-Year, Degree-Seeking Student Cohorts --University Summary

Fall Cohort	N 1st Fall	2nd Fall		3rd Fall		4th Fall		5th Fall				6th Fall				7th Fall			
		Cohort Retained		Cohort Retained		Cohort Retained		Cumulative Graduated within 4 yrs*		Cohort Retained		Cumulative Graduated within 5 yrs		Cohort Retained		Cumulative Graduated within 6 yrs		Cohort Retained	
		n	% 1F	n	% 1F	n	% 1F	n	% 1F	n	% 1F	n	% 1F	n	% 1F	n	% 1F	n	% 1F
2004	1,874	1,573	83.9	1,364	72.8	1,308	69.9	734	39.2	535	28.6	1,155	61.7	94	5.0	1,223	65.4	28	1.6
2005	1,897	1,609	84.9	1,444	76.2	1,378	72.8	812	42.9	529	27.9	1,238	65.4	81	4.3	1,298	68.5	26	1.4
2006	1,885	1,617	85.8	1,468	77.9	1,401	74.4	803	42.6	553	29.4	1,233	65.5	93	4.9	1,298	68.9	26	1.4
2007	1,957	1,650	84.4	1,511	77.3	1,428	73.0	857	43.8	536	27.4	1,266	64.8	96	4.9	1,346	68.8	27	1.4
2008	1,993	1,683	84.4	1,517	76.2	1,453	72.9	870	43.7	528	26.5	1,271	63.8	108	5.4	1,340	67.3	35	1.8
2009	2,241	1,909	85.2	1,747	78.0	1,693	75.5	954	42.6	670	29.9	1,502	67.0	113	5.0	1,588	70.9	35	1.6
2010	2,062	1,775	86.1	1,638	79.4	1,568	76.1	947	46.0	555	26.9	1,391	67.5	88	4.3	1,444	70.1	31	1.5
2011	2,283	1,950	85.4	1,822	79.8	1,733	75.9	1,110	48.6	592	26.0	1,587	69.6	102	4.5	1,657	72.6	25	1.1
2012	2,326	2,032	87.4	1,882	80.9	1,804	77.6	1,178	50.7	596	25.6	1,662	71.5	97	4.2	1,737	74.7	30	1.3
2013	2,292	2,014	87.9	1,885	82.3	1,803	78.8	1,237	54.0	558	24.4	1,693	74.0	73	3.2				
2014	2,344	2,060	87.9	1,930	82.4	1,862	79.5	1,289	55.0	515	22.0								
2015	2,381	2,043	85.8	1,909	80.2	1,810	76.1												
2016	2,441	2,077	85.1	1,904	78.0														
2017	2,620	2,215	84.6																
2018	2,771																		

Note: Data is from Fall enrollment at census dates and completions files as reported to IPEDS. Includes degree sweeps and IPEDS exclusions through 10/2018.

Second-Year Retention Rates for First-Time, Full-Time, Degree-Seeking First Year by Race/Ethnicity

Fall Cohort	African American			Asian			Latino			Native American			Caucasian		
	N 1 st Fall	N 2 nd Fall	% Retained	N 1 st Fall	N 2 nd Fall	% Retained	N 1 st Fall	N 2 nd Fall	% Retained	N 1 st Fall	N 2 nd Fall	% Retained	N 1 st Fall	N 2 nd Fall	% Retained
2011	191	154	80.6	29	25	86.2	162	132	81.5	1	1	100.0	1,839	1,588	86.4
2012	211	181	85.8	47	42	89.4	136	114	83.8	0	0	0.0	1,881	1,652	87.8
2013	231	193	83.5	48	44	91.7	122	102	83.6	1	1	100.0	1,811	1,605	88.6
2014	232	190	81.9	48	42	87.5	119	106	89.1	1	1	100.0	1,843	1,638	88.9
2015	251	214	85.3	38	33	86.8	159	127	79.9	1	1	100.0	1,831	1,590	86.9
2016	263	216	82.1	53	45	84.9	147	110	74.8	0	0	0.0	1,843	1,603	87.0
2017	242	198	81.8	63	53	84.1	157	125	79.6	3	3	100.0	2,014	1,716	85.2
2018	271			70			193			4			2,065		

Note: Data is from Fall enrollment at census dates and completions files as reported to IPEDS. Includes degree sweeps and IPEDS exclusions through 10/2018.

Second-Year Retention Rates for First-Time, Full-Time, Degree-Seeking First Year by Gender

Fall Cohort	Male			Female		
	N 1 st Fall	N 2 nd Fall	% Retained	N 1 st Fall	N 2 nd Fall	% Retained
2011	904	754	83.4	1,379	1,196	86.7
2012	869	764	87.9	1,457	1,268	87.0
2013	810	687	84.8	1,482	1,327	89.5
2014	892	790	88.6	1,452	1,270	87.5
2015	888	746	84.0	1,493	1,297	86.9
2016	944	788	83.5	1,497	1,289	86.1
2017	1,031	850	82.5	1,589	1,365	85.9
2018	1,064			1,707		

Note: Data is from Fall enrollment at census dates and completions files as reported to IPEDS. Includes degree sweeps and IPEDS exclusions through 10/2018.

Four Year Graduation Rates for First-Time, Full-Time First Year by Race/Ethnicity

Fall Cohort	African American			Asian			Latino			Native American			Caucasian		
	N 1st Fall	N Graduated within 4 years	% Graduated within 4 years	N 1st Fall	N Graduated within 4 years	% Graduated within 4 years	N 1st Fall	N Graduated within 4 years	% Graduated within 4 years	N 1st Fall	N Graduated within 4 years	% Graduated within 4 years	N 1st Fall	N Graduated within 4 years	% Graduated within 4 years
2009	178	29	16.3	39	11	28.2	85	20	23.5	6	1	16.7	1,908	881	46.2
2010	199	45	22.6	38	16	42.1	115	34	29.6	1	1	100.0	1,644	826	50.3
2011	191	50	26.2	29	14	48.3	162	55	34.0	1	1	100.0	1,839	963	52.4
2012	211	54	25.6	47	26	55.3	136	52	38.2	0	0	0.0	1,881	1,025	54.5
2013	231	56	24.2	48	28	58.3	122	52	43.0	1	1	100.0	1,811	1,061	58.7
2014	232	58	25.0	48	35	72.9	119	56	47.1	1	1	100.0	1,843	1,091	59.2

Note: Data is from Fall enrollment at census dates and completions files as reported to IPEDS. Includes degree sweeps and IPEDS exclusions through 10/2018.

Six Year Graduation Rates for First-Time, Full-Time First Year by Race/Ethnicity

Fall Cohort	African American			Asian			Latino			Native American			Caucasian		
	N 1st Fall	N Graduated within 6 years	% Graduated within 6 years	N 1st Fall	N Graduated within 6 years	% Graduated within 6 years	N 1st Fall	N Graduated within 6 years	% Graduated within 6 years	N 1st Fall	N Graduated within 6 years	% Graduated within 6 years	N 1st Fall	N Graduated within 6 years	% Graduated within 6 years
2007	190	98	51.6	39	28	71.8	62	33	53.2	9	7	77.8	1,656	1,180	71.3
2008	201	110	54.7	42	30	71.4	90	62	68.9	5	4	80.0	1,638	1,123	68.6
2009	178	87	48.9	39	26	66.7	85	45	52.9	6	4	66.7	1,908	1,411	74.0
2010	199	107	53.8	38	29	76.3	115	71	61.7	1	1	100.0	1,644	1,193	72.7
2011	191	107	56.0	29	22	75.9	162	97	59.9	1	1	100.0	1,839	1,385	75.4
2012	211	123	58.3	47	34	72.3	136	82	60.3	0	0	0.0	1,881	1,462	77.8

Note: Data is from Fall enrollment at census dates and completions files as reported to IPEDS. Includes degree sweeps and IPEDS exclusions through 10/2018.

Four Year Graduation Rates for First-Time, Full-Time First Year by Gender

Fall Cohort	Male			Female		
	N 1st Fall	Graduated within 4 years		N 1st Fall	Graduated within 4 years	
		#	%		#	%
2009	888	277	31.2	1,353	677	50.0
2010	767	264	34.5	1,295	683	52.7
2011	904	338	37.4	1,379	772	56.0
2012	869	358	41.2	1,457	820	56.3
2013	810	332	41.1	1,482	905	61.1
2014	892	405	45.5	1,452	884	60.9

Note: Data is from Fall enrollment at census dates and completions files as reported to IPEDS. Includes degree sweeps and IPEDS exclusions through 10/2018.

Six Year Graduation Rates for First-Time, Full-Time First Year by Gender

Fall Cohort	Male			Female		
	N 1st Fall	Graduated within 6 years		N 1st Fall	Graduated within 6 years	
		#	%		#	%
2007	741	455	61.5	1,216	891	73.3
2008	762	463	60.8	1,231	877	71.2
2009	888	581	65.4	1,353	1,007	74.4
2010	767	475	62.1	1,295	969	74.8
2011	904	604	66.9	1,379	1,053	76.4
2012	869	614	70.7	1,457	1,123	77.1

Note: Data is from Fall enrollment at census dates and completions files as reported to IPEDS. Includes degree sweeps and IPEDS exclusions through 10/2018.

A large purple graphic element consisting of a thick L-shaped bar. The vertical bar is on the right side, and the horizontal bar extends to the left, framing the text box.

ACADEMIC DEGREE AND CERTIFICATE PROGRAMS

Undergraduate Degree and Certificate Programs - Fall 2018

College of Arts and Humanities

BA Communication Studies
BA English: Literature
BA English: Writings
BA History
BA History: American Studies
BA Languages & Cultures: French
BA Languages & Cultures: German
BA Languages & Cultures: Russian
BA Languages & Cultures: Spanish
BA Media & Culture
BA Philosophy
BA Philosophy Accelerated
BA Philosophy: Religious Studies
BA: Theatre
BA Theatre: Design/Tech/Management
BA Theatre: Music Theatre
BA Theatre: Performance
BA Women's and Gender Studies
BFA Graphic & Inter. Design
BFA Studio Arts
BSED English: Literature
BSED English: Writings
Certificate TESL
Teaching Certification English
Teaching Certification French
Teaching Certification German
Teaching Certification Latin
Teaching Certification Russian
Teaching Certification Social Studies - History
Teaching Certification Spanish
Teaching Certification Teacher Ed French
Teaching Certification Teacher Ed German

College of Arts and Humanities (cont...)

Teaching Certification Teacher Ed Russian
Teaching Certification Teacher Ed Spanish
Teaching Certification Teacher Ed Social Studies - History

School of Music

BM Music: Performance Instr
BM Music: Performance Jazz
BM Music: Performance Keyboard
BM Music: Performance Voice
BM Music Educ: Instrument
BM Music Educ: Keyboard
BM Music Educ: Voice
BM Music: Elective Studies
BM Music: History
BM Music: Theory
BM Music: Composition
Teaching Certification Music Education

College of Business and Public Management

BA Geography
BA Geography Accelerated
BA Geography: Environmental
BA Geography: Environmental Accelerated
BA Geography: Geographic Information Systems
BA Geography: Geographic Information Systems Accelerated
BA Geography: Urban/Regional Planning
BS Accounting
BS Business Management
BS Business Management (DCCC Marple)
BS Business Management (Philadelphia)

College of Business and Public Management (cont...)

BS Criminal Justice
BS Criminal Justice Accelerated
BS Criminal Justice Accelerated (Philadelphia)
BS Economics
BS Finance
BS International Business
BS Marketing
BS Pre-Business: Accounting
BS Pre-Business: Eco-Finance
BS Pre-Business: Management
BS Pre-Business: Management (DCCC Marple)
BS Pre-Business: Management (Philadelphia)
BS Pre-Business: Marketing
BS Pre-International Business
BS Urban & Environmental Plan
BS Urban & Environmental Plan Accelerated to MS Geography
BS Urban & Environmental Plan Accelerated to MURP
Teacher Education Social Studies - Geography Teacher Certification

College of Education and Social Work

BSED Early Grades Prep, PK-4 Education
BSED Middle Grades Prep, 4-8 Education
BSED Special Education: 7-12
BSED Special Education: PK-8
BSW Social Work
BSW Social Work (Philadelphia)
Certificate Education for Sustainability
Teaching Certification Early Childhood Education

Undergraduate Degree and Certificate Programs - Fall 2018 (continued)

College of Health Sciences

BA Communication Science & Disorders
BS Environmental Health
BS Exercise Science
BS Health and Physical Education
BS Health Science: General
BS Health Science: Respiratory Care
BS Health Science: Sport Medicine Concentration
BS Health Science: Sport Medicine Concentration Accelerated
BS Nutrition and Dietetics
BS Nutrition and Dietetics Accelerated
BS Nutrition: Lifestyle Nutrition
BS Nutrition: Sustainable Food Systems Management
BS Pre-Chiropractic
BS Pre-Occupational Therapy
BS Pre-Physical Therapy
BS Public Health
BSN Nursing
BSN Nursing: 2nd Degree
BSN Nursing: RN
BSN Nursing: RN (Philadelphia)
Certificate Athletic Training
Pre-Grad Program Certificate

School of Interdisciplinary and Graduate Studies

BA Liberal Studies: Arts & Humanities
BS Liberal Studies: Profession
BS Liberal Studies: Science/Math
Certificate Honors Seminar
Undeclared Business
Undeclared General
Undeclared Internal Transfer

College of Science and Mathematics

BA Anthropology
BA Mathematics
BA Mathematics Accelerated
BA Political Science: Government and Politics
BA Political Science: Int'l Relations
BA Psychology
BA Sociology
BS Biochemistry
BS Biology
BS Biology: Cell & Molecular
BS Biology: Ecology/Conserv
BS Biology: Ecology/Conserv Accelerated
BS Biology: Integ. Accelerated
BS Biology: Marine Science
BS Biology: Medical Lab Science
BS Biology: Microbiology
BS Biomedical Engineering
BS Chemistry
BS Chemistry-Biology
BS Computer Science
BS Computer Science Accelerated
BS Forensic & Toxicological Chemistry
BS Geoscience: Earth Systems
BS Geoscience: Earth Systems Accelerated
BS Geoscience: Geology
BS Geoscience: Geology Accelerated
BS Mathematics: Actuarial Science
BS Mathematics: Applied & Computational
BS Mathematics: Applied & Computational Accelerated
BS Mathematics: Finance
BS Mathematics: Pure Mathematics
BS Mathematics: Pure Mathematics Accelerated

College of Science & Mathematics (cont..)

BS Mathematics: Statistics
BS Mathematics: Statistics Accelerated
BS Pharmaceutical Product Development
BS Physics
BS Physics-Engineering
BSED Biology
BSED Chemistry
BSED Earth-Space Sci: Geology
BSED Earth-Space Science
BSED Mathematics
BSED Physics
Certificate Computer Security
Teaching Certification Biology
Teaching Certification Chemistry
Teaching Certification Earth-Space Science
Teaching Certification General Science
Teaching Certification Mathematics
Teaching Certification Physics
Teaching Education General Science
Teaching Education Social Studies-Political Science

Graduate Degree and Certificate Programs - Fall 2018

College of Arts and Humanities

Certificate Business Ethics
Certificate Healthcare Ethics
Certificate Holocaust and Genocide Studies
Certificate Publishing
Certificate TESL
MA Communication Studies
MA English
MA History
MA Holocaust and Genocide Studies
MA Languages & Cultures in French
MA Languages & Cultures in German
MA Languages & Cultures in Spanish
MA Philosophy: Applied Ethics
MA Philosophy: General
MA Philosophy: Applied Ethics - Accelerated
MA Philosophy: General - Accelerated
MA TESL
Teaching Certification English
Teaching Certification French
Teaching Certification German
Teaching Certification Latin
Teaching Certification Social Studies - History
Teaching Certification Spanish

School of Music

Certificate Kodaly Methodology
Certificate Music Technology
Certificate Orff-Schulwerk
Certificate Piano Pedagogy
MM Music: History and Literature
MM Music Performance
MM Music Performance- Choral Cond
MM Music Performance- Instrument Cond
MM Music Performance- Organ
MM Music Performance- Piano
MM Music Performance- Vocal
MM Music Performance- Instrument
MM Music: Piano Pedagogy
MM Music: Theory & Composition
MM Music Education: Kodaly
MM Music Education: Mus. Tech
MM Music Education: Orff Schulwerk
MM Music Education: Research
MM Music Education: Performance
MM Music Education: Technology
Teaching Certification Music Education

College of Business and Public Management

Certificate Administration
Certificate Geographic Information Systems
Certificate Human Resource Management
Certificate Non Profit Administration
Certificate Urban and Regional Planning
Doctor of Public Administration
Master of Urban and Regional Planning - Accelerated
Master of Urban and Regional Planning
MBA General
MPA Human Resource Management
MPA Nonprofit Administration
MPA Public Administration
MS Criminal Justice
MS Criminal Justice - Accelerated
MS Criminal Justice (Philadelphia)
MS Criminal Justice (Philadelphia) - Accelerated
MS Geography
MS Geography -Accelerated
MS Human Resource Management

Graduate Degree and Certificate Programs - Fall 2018 (continued)

College of Education and Social Work

Certificate Autism
 Certificate Education for Sustainability
 Certificate Educational Technology
 Certificate Entrepreneurial Education
 Certificate Gerontology
 Certificate Higher Education Policy & Student Affairs
 Certificate Literacy
 Certificate Literacy Coaching
 Certificate of Advanced Graduate Professional Growth
 Certificate Professional Counseling Licensure Prep
 Certificate Special Education
 Certificate Universal Design Learning
 Doctor of Education
 MED Applied Studies in Teaching and Learning
 MED Applied Studies in Teaching and Learning (wil)
 MED Counseling - School
 MED Early Childhood Education
 MED Reading
 MED Secondary Education
 MED Special Education
 MED Special Education (online)
 MS Clinical Mental Health Counseling
 MS Higher Education Policy & Student Affairs
 MS Transfer Education & Soc. Change
 MSW Social Work
 MSW Social Work Advanced Stand
 MSW Social Work (Phila)
 MSW Social Work , Adv St, Phila
 Professional Growth Counselling
 Professional Growth Reading
 Professional Growth Special Education
 Reading MED at Coatsville School Dist
 Reading MED at OJR School Dist
 Teaching Certification Counseling
 Teaching Certification Early Childhood Education
 Teaching Certification Early Grades Preparation
 Teaching Certification Middle Grades Preparation
 Teaching Certification Reading
 Teaching Certification Secondary Education
 Teaching Certification Special Education 7-12 (Online)

College of Education and Social Work (cont..)

Teaching Certification Special Education 7-12 (Philadelphia)
 Teaching Certification Special Education: 7-12
 Teaching Certification Special Education: PK-8
 Teaching Certification Special Education: PK-8 (Online)
 Teaching Certification Special Education: PK-8 (Philadelphia)
 Teaching Certification Reading (Philadelphia)

College of Science and Mathematics

Certificate Web Technology
 Certificate Applied Statistics
 Certificate Computer Security
 Certificate Industrial/Organizational Psychology
 Certificate Information Systems
 Certificate Clinical Mental Health
 Certificate Post Master Advanced Study in Applied Statistics
 Doctorate of Psychology
 MA Mathematics
 MA Mathematics Accelerated
 MA Mathematics: Math Education
 MA Psychology: Clinical
 MA Psychology: General
 MA Psychology: Industrial/Organizational
 MS Applied & Computational Math
 MS Applied & Computational Math Accelerated
 MS Applied Statistics
 MS Applied Statistics Accelerated
 MS Applied Statistics: Biostatistics Conc.
 MS Applied Statistics: Business & Marketing Analytics Conc.
 MS Biology: Non-Thesis
 MS Biology: Thesis
 MS Biology: Thesis Accelerated
 MS Computer Science
 MS Computer Science Accelerated
 MS Geoscience
 MS Geoscience Accelerated
 Teaching Certification Biology
 Teaching Certification Chemistry
 Teaching Certification Earth-Space Science
 Teaching Certification General Science
 Teaching Certification Physics

College of Health Sciences

Doctorate of Nursing Practice
 Certificate Adapted Physical Education
 Certificate Applied Mindfulness
 Certificate Emergency Preparedness
 Certificate Health Care Management
 Certificate Health: Integrative Health
 Certificate Post Master Dietetic Intern
 Certificate School Nursing
 Certificate Sports Management and Athletics
 MA Speech-Language Pathology
 MED Health - School Health
 MPH Public Health: Administration
 MPH Public Health: Community
 MPH Public Health: Environment
 MPH Public Health: Integrative
 MPH Public Health: Management
 MPH Public Health: Nutrition
 MS Athletic Training
 MS Athletic Training Accelerated
 MS Athletic Training - Post Professional Concentration
 MS Community Nutrition
 MS Community Nutrition Accelerated
 MS Community Nutrition - Non-Int
 MS Exercise and Sport Science
 MS Exercise and Sport Science - Applied Sport Performance Concentration
 MS Exercise and Sport Science - Clinical Exercise Physiology Concentration
 MS Exercise and Sport Science - Sport/Exercise Psychology Concentration
 MS Health and Physical Education - Sport/Exercise Physiology
 MS Physical Education
 MSN Nursing
 MSN Nursing: Advanced Practice-Adult Gerontology
 MSN Nursing: Nurse Educator
 Teaching Certificate Health & Physical Education
 Teaching Certificate School Nursing

Professional and Program Accreditations

West Chester University is accredited by
The Middle States Commission on Higher Education (MSCHE)

Accreditation Board for Engineering and Technology (ABET)
Accreditation Council for Continuing Medical Education (ACCME)
Accreditation Council for Education in Nutrition and Dietetics (ACEND)
American Chemical Society (ACS)
American Council on Teaching Foreign Languages (ACTFL)- Recognized Programs
American Orff Schulwerk Association (AOSA)
American Speech-Language-Hearing Association (ASHA)
Association for Middle Level Education (AMLE)- Recognized Programs
Commission on Accreditation of Allied Health Education Programs (CAAHEP)
Commission on Accreditation of Athletic Training Education (CAATE)
Council for Accreditation of Counseling and Related Educational Programs (CACREP)
Commission on Collegiate Nursing Education (CCNE)
Committee on Accreditation for Respiratory Care (CoARC)
Council on Education for Public Health (CEPH)
Council on Social Work Education (CSWE)
Council For Exceptional Children (CEC)- Recognized Programs

Professional and Program Accreditations (Continued)

Forensic Science Education Programs Accreditation Communication (FEPAC)
International Literacy Association (IRA)- Recognized Programs
International Association to Advance Collegiate Schools of Business (AACSB)
Middle States Commission on Higher Education (MSCHE)
National Association of Schools of Music (NASM)
National Association for the Education of Young Children (NAEYC) - Recognized Programs
National Association of Schools of Art and Design (NASAD)
National Association of Schools of Theatre (NAST)
National Council for the Accreditation of Teacher Education (NCATE)
National Council for the Social Studies (NCSS) - Recognized Programs
National Council of Teachers of English (NCTE) - Recognized Programs
National Science Teachers Association (NSTA) - Recognized Programs
National Environmental Health Science and Protection Accreditation Council (EHAC)
Network of Schools of Public Policy, Affairs, and Administration (NASPAA)
Organization of American Kodaly Educators (OAKE)
Pennsylvania Department of Education (PDE)
Society of Health and Physical Educators (SHAPE) - Recognized Programs



DEGREES CONFERRED

The following counts include only Baccalaureate (Primary and Secondary Major), Master's and Doctoral degrees

College of Art & Humanities

	2016-17	2017-18
Communication Studies		
Communication Studies BA	212	202
Communication Studies Undergraduate Total	212	202
Commun. Studies MA (Phila)	1	3
Communication Studies MA	7	6
Communication Studies Graduate Total	8	9
Communication Studies Total	220	211

English

English BA: Literature	22	21
English BA: Writings	36	46
English BSED: Literature	15	13
English BSED: Writings	8	8
English Undergraduate Total	81	88
English MA	10	19
English Graduate Total	10	19
English Total	91	107

Foreign Languages

BA Languages & Culture, French	3	1
BA Languages & Culture, Russia	5	3
BA Languages & Cultures, Span	6	7
BA Languages & Cultures, Germ		2
French BA	3	1
German BA	2	1
Latin BA		
Russian BA	1	
Spanish BA	13	6
Foreign Languages Undergraduate Total	33	21

Foreign Languages Continued...

	2016-17	2017-18
French MA	1	
French MED	2	
Lang & Cultures MA, French		1
Lang & Cultures MA, Spanish		2
Spanish MA	3	2
Spanish MED	2	
Foreign Languages Graduate Total	8	5
Foreign Languages Total	41	26

History

History BA	65	54
History: American Studies BA	1	
History Undergraduate Total	66	54
History MA	6	6
History MED	1	
History Graduate Total	7	6
History Total	73	60

Holocaust and Genocide Studies

Holocaust & Genocide Studie MA	3	6
Holocaust and Genocide Graduate Total	3	6
Holocaust and Genocide Studies Total	3	6

Philosophy

Philosophy BA	15	9
Philosophy:Religious Studie BA	2	1
B.A. Philosophy Accelerated		1
Philosophy Undergraduate Total	17	11
Philosophy MA: Applied Ethics		
Philosophy MA: General	5	3
Philosophy Graduate Total	5	3
Philosophy Total	22	14

	2016-17	2017-18
Teach Eng as a Second Lang		
TESL MA	6	9
Teach Eng as a Second Language Graduate Total	6	9
Teach Eng as a Second Lang Total	6	9
Womens Studies		
Women's and Gender Studies BA	13	30
Women Studies Undergraduate Total	13	30
Womens Studies Total	13	30
Art & Design		
Graphic & Inter. Design BFA	25	24
Studio Arts BA		
Studio Arts BFA	13	8
Art & Design Undergraduate Total	38	32
Art & Design Total	38	32
Theatre Arts		
Theatre and Dance: Dance BA		
Theatre: BA	8	5
Theatre: Design/Tech/Manag BA	3	3
Theatre: Mus Thtre BA	15	8
Theatre: Performance BA		3
Theatre Arts Undergraduate Total	26	19
Theatre Arts Total	26	19
College of Arts and Humanities Undergraduate Total	486	457
College of Arts and Humanities Graduate Total	47	57
College of Art & Humanities Total	533	514

School of Music

	2016-17	2017-18
Applied Music		
Music: Performance Instr BM	21	10
Music: Performance Jazz BM	4	2
Music: Performance Keyboard BM	1	5
Music: Performance Voice BM	6	2
Applied Music Undergraduate Total	32	19
Music Performance MM	9	2
Music: Piano Pedagogy MM	3	
Music Perform-MM Instrum. Cond	1	3
Applied Music Graduate Total	13	5
Applied Music Total	45	24
Music Education		
Music Educ: Instrument BM	36	23
Music Educ: Keyboard BM	5	1
Music Educ: Voice BM	11	5
Music Education Undergraduate Total	52	29
Music Education MM: Research	2	2
Music Education MM: Performance	1	5
Music Education MM: Kodaly	2	1
Music Education MM: Orff-Schul	5	
Music Education: Technology	4	3
Music Education Graduate Total	14	11
Music Education Total	66	40

	2016-17	2017-18
Music Theory, History and Comp		
Music: Elective Studies BM	7	3
Music: Theory & Composition BM	8	5
Music: History BM	1	2
Music, Theory, History and Comp Undergraduate Total	16	10
Music History MA		
Music: History and Literature		
Music: Theory & Composition MM	1	1
Music, Theory, History and Comp Graduate Total	1	1
Music Theory, History and Comp Total	17	11
School of Music Undergraduate Total	100	58
School of Music Graduate Total	28	17
School of Music Total	128	75

College of Business & Public Management

Criminal Justice

Criminal Justice BS	142	111
Criminal Justice BS (Phila)	9	8
Criminal Justice BS Accel	6	14
Criminal Justice BS Phila Accel	1	2
Criminal Justice Undergraduate Total	158	135
Criminal Justice MS Accelerate		5
Criminal Justice MS	12	10
Criminal Justice MS (Phila)	5	10
Criminal Justice Graduate Total	17	25
Criminal Justice Total	175	160

Geography & Planning

	2016-17	2017-18
Geography BA	1	2
Geography: Environmental	11	4
Geography:GIS BA	8	2
Geography:GIS Accelerated		1
Geography:Urban/Regional PI BA	2	
Urban & Environmental Plan BS	5	12
Geography & Planning Undergraduate Total	27	21
Geography MS	10	13
Regional Planning MPA		
Master of Urban and Regional Planning		1
Geography & Planning Graduate Total	10	14
Geography & Planning Total	37	35

Public Policy and Administration

Human Resource Mgmt. MPA	7	4
Human Resource Mgmt. MSA		
Long-Term Hlth Care MSA		
Nonprofit Administration MPA	5	4
Public Administration MPA	20	41
Sport & Athletic Admin MSA		
Sport Mgt & Athletics MPA		
Training & Developmt MSA		
Public Policy and Administration Graduate Total	32	49
Doctor of Public Administration	6	6
Public Policy and Administration Doctorate Total	6	6
Public Policy and Administration Total	38	55

Accounting

Accounting BS	138	147
Accounting Undergraduate Total	138	147
Accounting Total	138	147

Economics

	2016-17	2017-18
Economics BS	75	79
Finance BS	230	220
Economics Undergraduate Total	305	299
Economics Total	305	299

Management

Business Management BS	222	240
International Business BS	1	7
Management Undergraduate Total	223	247
Human Resource Management MS		7
Management Graduate Total		7
Management Total	223	254

Marketing

Marketing BS	200	219
Marketing Undergraduate Total	200	219
Marketing Total	200	219

MBA Program

Bus Admin: General MBA	78	132
MBA Program Graduate Total	78	132
MBA Program Total	78	132
College of Business & Public Management Undergraduate Total	1051	1068
College of Business & Public Management Graduate Total	137	227
College of Business & Public Management Doctorate Total	6	6
College of Business & Public Management Total	1,194	1,301

College of Education & Social Work

	2016-17	2017-18
Counselor Education		
Couns: Higher Ed/Stu Aff MS	28	30
Counseling: Elementary MED		
Counseling: School MED	51	31
Counseling: Secondary MED		
MS Clinical Mental Health Counseling		11
Counselor Education Graduate Total	79	72
Counselor Education Total	79	72
Early and Middle Grades Ed.		
Early Childhood Educ BSED		
Early Grades Prep, PK-4 BSED	204	206
Elementary Education BSED		
Middle Grades Prep, 4-8 BSED	53	35
Early and Middle Grades Ed. Undergraduate Total	257	241
App Stud Teach/Lear MED (sprf)	20	
Applied Studies Teach/Lear MED	18	11
Early Childhood Education MED	23	17
Early and Middle Grades Ed. Graduate Total	61	28
Early and Middle Grades Ed. Total	318	269
Literacy		
Reading MED	31	28
Reading MED at OJR School Dist		10
Literacy Graduate Total	31	38
Literacy Total	31	38
Educational Foundations and Policy Studies		
Secondary Education MED	1	2
MS Transf Edu & Soc Change	4	8
Educational Foundations and Policy Studies Graduate Total	5	10
Educational Foundations and Policy Studies Total	5	10

	2016-17	2017-18
Special Education		
Special Education BSED		
Special Education: 7-12 BSED	9	13
Special Education: PK-8 BSED	102	109
Special Education Undergraduate Total	111	122
Special Education MED	9	9
Special Education MED (online)	34	43
Special Education MED (Phila)		1
Special Education Graduate Total	43	53
Special Education Total	154	175
Social Work		
Social Work BSW	53	48
Social Work BSW (Phila)	10	17
Social Work Undergraduate Total	63	65
Social Work MSW	44	40
Social Work MSW (Phila)	22	35
Social Work MSW Advanced Stand	13	17
Social Work MSW, Advanced Stand, Phila	1	10
Social Work Graduate Total	80	102
Social Work Total	143	167
Education Policy and Planning		
Doctoral of Education		14
Education Policy and Planning Doctoral Total		14
Social Work Total		14
College of Education & Social Work Undergraduate Total	431	428
College of Education & Social Work Graduate Total	299	303
College of Education & Social Work Doctoral Total		14
College of Education & Social Work Total	730	745

College of Health Sciences

	2016-17	2017-18
Communicative Disorders		
Communication Sci & Disord BA	92	98
Communicative Disorders Undergraduate Total	92	98
Speech-Language Pathology MA	26	27
Communicative Disorders Graduate Total	26	27
Communicative Disorders Total	118	125
Kinesiology		
Exercise Science BS	60	58
Health & Physical Educ BS	18	28
Pre-Chiropractic BS	2	1
Pre-Occupational Therapy BS	60	74
Pre-Physical Therapy BS	71	62
Kinesiology Undergraduate Total	211	223
Hlth&Phys Ed: Exercise Phys MS	1	
MS in Ex Sport Phys: Athl Trng	7	10
MS in Exercise/Sport Physiolog	5	12
MS in Physical Education		
Kinesiology Graduate Total	13	22
Kinesiology Total	224	245
Nutrition		
Nutrition and Dietetics BS	115	118
Nutrition and Dietetics BS Accel	22	17
Nutrition Undergraduate Total	137	135
Public Health MPH: Nutrition	14	9
Community Nutrition MS	3	22
Community Nutrition MS Acceler		1
Nutrition Graduate Total	17	32
Nutrition Total	154	167
Sports Medicine Department		
Athletic Training BS	36	29
Sports Medicine Department Undergraduate Total	36	29
Sports Medicine Department Total	36	29

	2016-17	2017-18
Nursing		
Nursing BSN	50	62
Nursing BSN: 2nd degree	30	32
Nursing BSN: RN	44	60
Nursing BSN: RN (Phila)	30	36
Nursing Undergraduate Total	154	190
Nursing MSN	1	1
Public Hlth Nursing MSN: Admin		
Public Hlth Nursing MSN: Integ		
Nursing MSN: Nurse Educator		7
Nursing MSN:APRN/Adult Gero		4
Nursing Graduate Total	1	12
Doctor of Nursing Practice	21	20
Nursing Doctorate Total	21	20
Nursing Total	176	222
Health		
Environmental Health BS	13	10
Health Sci: General BS	22	18
Hlth Sci: Respiratory Care BS	20	24
Public Health	51	73
Health Undergraduate Total	106	125
Health: School Health MED	9	5
Public Health MPH: Community	37	31
Public Health MPH: Environment	6	7
Public Health MPH: Integrative		1
Public Health MPH: Management	23	15
Public Health MPH:Admin		1
Health Graduate Total	75	60
Health Total	181	185
College of Health Sciences Undergraduate Total	736	800
College of Health Sciences Graduate Total	132	153
College of Health Sciences Doctorate Total	21	20
College of Health Sciences Total	889	973

College of Sciences & Mathematics

Anthropology & Sociology

	2016-17	2017-18
Anthropology BA	17	8
Sociology BA	26	27
Anthropology & Sociology Undergraduate Total	43	35
Anthropology & Sociology Total	43	35

Biology

Biology BA		1
Biology BS	49	49
Biology BSED	2	5
Biology: Cell & Molecular BS	37	43
Biology: Ecology/Conserv BS	8	10
Biology: Marine Science	6	5
Biology: Microbiology BS	13	14
Biology: Medical Lab Sciences BS	1	4
B.S. in Biology : Integ, Accel		2
Biology Undergraduate Total	116	133
Biology : Thesis MS	6	3
Biology MS	4	7
Biology Graduate Total	10	10
Biology Total	126	143

Chemistry

Biochemistry BS	4	1
Chemistry BS	18	9
Chemistry BSED	1	
Chemistry-Biology BS	17	12
Foren & Toxicol Chemistry BS	5	7
Chemistry Undergraduate Total	45	29
Chemistry Total	45	29

College of Sciences & Mathematics Continued...

Computer Science

	2016-17	2017-18
Computer Science BS	57	72
Computer Science Undergraduate Total	57	72
Computer Science MS	17	8
Computer Science Graduate Total	17	8
Computer Science Total	74	80

Earth & Space Sciences

Earth-Space Science BSED	3	4
Geoscience : Earth Systems BS	8	8
Geoscience: Geology BS	24	15
Geoscience: Geology Accel	1	3
Geoscience: Earth Syst, Acc		2
Earth & Space Undergraduate Total	36	32
Geoscience MA		
Geoscience MS	10	3
Earth & Space Graduate Total	10	3
Earth & Space Total	46	35

Mathematics

Mathematics BA	4	2
Mathematics BSED	20	16
Mathematics: Actuarial Sci BS	21	15
Mathematics: Computational BS	1	
Mathematics: Computational BS Accel		2
Mathematics: Finance BS	6	3
Mathematics: Applied & Comp BS	2	3
Mathematics: Pure Mathematics	3	2
Mathematics: Pure Mathematics Accelerated		1
Mathematics: Statistics BS	11	9
Mathematics: Statistics BS, Accel		1
Mathematics Undergraduate Total	68	54

College of Sciences & Mathematics Continued...**Mathematics Continued...**

	2016-17	2017-18
Applied Statistics MS	30	27
Mathematics MA	11	5
Applied & Comp Math MS		2
Mathematics Graduate Total	41	34
Mathematics Total	109	88

Pharmaceutical Product Dev.

Pharmaceutical Product Dev BS	17	14
Pharmaceutical Product Dev. Undergraduate Total	17	14
Pharmaceutical Product Dev. Total	17	14

Physics

Physics BS	15	13
Physics BSED	1	2
Physics-Engineering BS	5	
Physics Undergraduate Total	21	15
Physics Total	21	15

Political Science

Poli Sci:Applied Pub Policy BA	6	4
Polit Sci : Int'l Relations BA	24	21
Political Sci. Gov. and Pol.	32	33
Political Science Undergraduate Total	62	58
Political Science Total	62	58

Psychology

	2016-17	2017-18
Psychology BA	231	248
Psychology Undergraduate Total	231	248
Psychology: Clinical MA	28	18
Psychology: General MA	2	5
Psychology: Industrial MA	17	13
Psychology Graduate Total	47	36
Psychology Total	278	284
College of Science & Mathematics Undergraduate Total	696	690
College of Science & Mathematics Graduate Total	125	91
College of Sciences & Mathematics Total	821	781

School of Interdisciplinary & Graduate Studies

Liberal Studies Program

Liberal Studies: Arts & Humanities BA	17	12
Liberal Studies: Sci/Math BS	8	12
Liberal Studies Program Undergraduate Total	25	24
Liberal Studies Program Total	25	24

Professional Studies Prog

Liberal Studies: Profession BS	181	146
Professional Studies Prog Undergraduate Total	181	146
Professional Studies Prog Total	181	146
School of Interdisciplinary Studies Total	206	170
School of Interdisciplinary & Graduate Studies Undergraduate Total	206	170
School of Interdisciplinary & Graduate Studies Total	206	170

University Undergraduate Total	3,706	3,671
University Graduate Total	768	848
University Doctorate Total	27	40
Universtiy Total	4,501	4,559

A large purple L-shaped graphic element is positioned on the right side of the page, partially overlapping the text box.

TUITION & FEES

Tuition and Fees by Semester

Tuition Category	2013-14	2014-15	2015-16	2016-17	2017-18	2018-19
Undergraduate Tuition						
Full-Time In-State	\$ 3,311.00	\$ 3,410.00	\$ 3,530.00	\$ 3,619.00	\$ 3,746.00	\$ 3,858.00
Full-Time Out-of-State	\$ 8,278.00	\$ 8,525.00	\$ 8,825.00	\$ 9,048.00	\$ 9,365.00	\$ 9,645.00
Per Credit In-State	\$ 276.00	\$ 284.00	\$ 294.00	\$ 302.00	\$ 312.00	\$ 322.00
Per Credit Out-of-State	\$ 690.00	\$ 710.00	\$ 735.00	\$ 754.00	\$ 780.00	\$ 805.00
Undergraduate Fees						
Full-Time In-State	\$ 1,114.00	\$ 1,161.90	\$ 1,200.78	\$ 1,241.20	\$ 1,309.33	\$ 1,347.88
Full-Time Out-of-State	\$ 1,209.00	\$ 1,271.90	\$ 1,314.78	\$ 1,358.20	\$ 1,430.33	\$ 1,472.88
Per Credit In-State	\$ 92.00	\$ 97.24	\$ 100.90	\$ 103.76	\$ 109.77	\$ 112.41
Per Credit Out-of-State	\$ 100.00	\$ 106.24	\$ 109.90	\$ 113.76	\$ 119.77	\$ 122.41
Graduate Tuition						
Full-Time In-State	\$ 3,978.00	\$ 4,086.00	\$ 4,230.00	\$ 4,347.00	\$ 4,500.00	\$ 4,644.00
Full-Time Out-of-State	\$ 5,967.00	\$ 6,129.00	\$ 6,345.00	\$ 6,525.00	\$ 6,750.00	\$ 6,966.00
Per Credit In-State	\$ 442.00	\$ 454.00	\$ 470.00	\$ 483.00	\$ 500.00	\$ 516.00
Per Credit Out-of-State	\$ 663.00	\$ 681.00	\$ 705.00	\$ 725.00	\$ 750.00	\$ 774.00
Graduate Fees*						
Full-Time In-State	\$ 1,067.00	\$ 1,115.25	\$ 1,156.13	\$ 1,199.55	\$ 1,479.65	\$ 1,521.25
Full-Time Out-of-State	\$ 1,157.00	\$ 1,223.25	\$ 1,264.13	\$ 1,307.55	\$ 1,587.65	\$ 1,629.25
Per Credit In-State	\$ 106.00	\$ 110.78	\$ 114.75	\$ 119.05	\$ 149.79	\$ 153.94
Per Credit Out-of-State	\$ 116.00	\$ 122.78	\$ 126.75	\$ 131.05	\$ 161.79	\$ 182.25
Residence Halls						
Meal Plan**	\$ 1,272.00	\$ 1,293.00	\$ 1,326.57	\$ 1,396.54	\$ 1,471.00	\$ 1,489.00

*For information about special graduate program rates, and tuition & fees for Doctoral and Philadelphia campus programs please visit https://wcupa.edu/_information/AFA/Fiscal/Bursar/newStudentsFallSpringGrad.aspx .

**14 Meals per week + \$250 Flex Dollars.

For detail information on meal plans https://wcupa.edu/_information/AFA/Fiscal/Bursar/FallSpringRoomBoard.aspx



LIBRARY RESOURCES

Library Statistics

FY 2014-2015 through 2017-2018

Holdings	2014-2015	2015-2016	2016-2017	2017-2018	One Year Difference
Library Holdings					
Volumes	745,645	737,705	719,762	740,365	20,603
Microforms	926,629	768,407	768,443	193,476	-574,967
E-Books	766,280	1,011,265	1,011,585	1,068,805	57,220
Audio/Video units*	835,363	834,616	1,098,632	46,695	-1,051,937
Circulation (General & Reserve)	63,802	58,402	51,364	30,385	-20,979
Holdings Total	3,408,323	3,418,006	3,400,916	2,127,742	-1,273,174
Total FTE Staff (includes student assistants)	50.37	47.87	47.00	48.00	1.00

*Includes tapes, CDs, DVDs

Other Library Materials	2015-2016	2016-2017	2017-2018
Items Digitized by WCU Library	7,563	10,077	48,016
Digital Art Images	2,609,072	N/A	N/A
Digital Pamphlets, Reports, etc.	2,953,055	N/A	N/A
Digital Manuscript Pages	6,480,000	N/A	N/A

For questions /comments or recommendations for other data to include in the Fact Book, please contact Nilima Inamdar, Office of Institutional Research, WCU, 887, Matlack Street, West Chester PA 19381. Email: ninamdar@wcupa.edu Phone: 610-436-2456.